

## PRAME Rabbit mAb

Catalog No: #57320

Package Size: #57320-1 50ul #57320-2 100ul

Orders: order@signalwayantibody.com

Support: tech@signalwayantibody.com

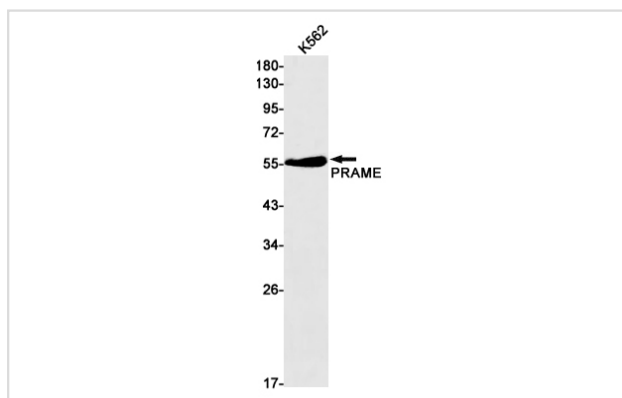
## Description

Product Name	PRAME Rabbit mAb
Host Species	Rabbit
Clonality	Monoclonal
Isotype	Rabbit IgG
Applications	WB IHC IP
Species Reactivity	Human,Mouse
Immunogen Description	Recombinant protein of human PRAME
Other Names	MAPE; OIP4; CT130; OIP-4
Accession No.	Swiss-Prot:P78395 Gene ID:23532
Uniprot	P78395
GeneID	23532;
Calculated MW	58 kDa
SDS-PAGE MW	58 kDa
Formulation	50mM Tris-Glycine(pH 7.4), 0.15M NaCl, 40% Glycerol, 0.01% Sodium azide and 0.05% BSA
Storage	Store at 4°C short term. Aliquot and store at -20°C long term. Avoid freeze/thaw cycles.

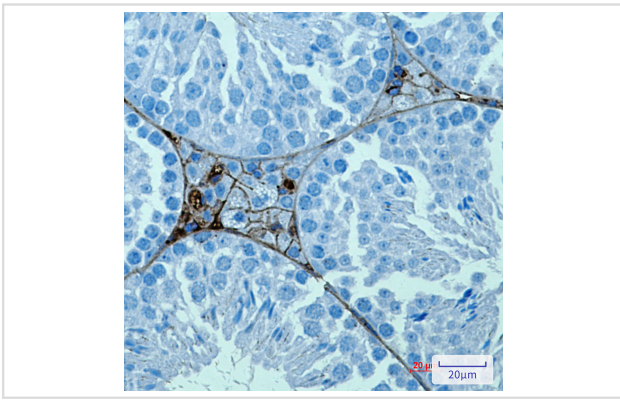
## Application Details

IP: 1/20WB: 1/500-1/1000IHC: 1/50-1/100

## Images



Western blot analysis of PRAME in K562 lysates using PRAME antibody.



Immunohistochemistry analysis of paraffin-embedded mouse testis using PRAME antibody. High-pressure and temperature Sodium Citrate pH 6.0 was used for antigen retrieval.

---

Note: This product is for in vitro research use only