

PSMA4 Rabbit mAb

Catalog No: #57326

Package Size: #57326-1 50ul #57326-2 100ul

Orders: order@signalwayantibody.com

Support: tech@signalwayantibody.com

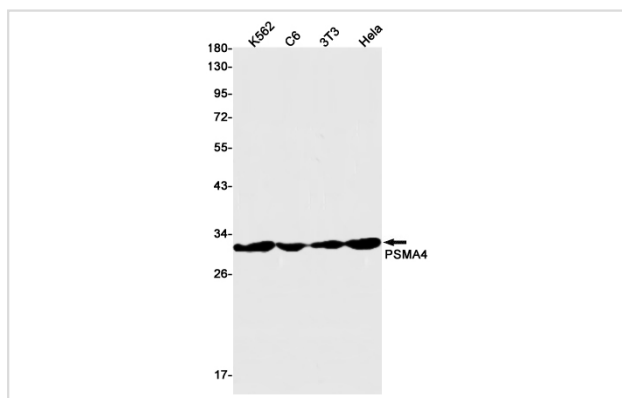
Description

Product Name	PSMA4 Rabbit mAb
Host Species	Rabbit
Clonality	Monoclonal
Isotype	Rabbit IgG
Applications	WB IHC IP ICC
Species Reactivity	Human,Mouse,Rat
Immunogen Description	A synthetic peptide of human PSMA4
Other Names	proteasome subunit alpha 4; HC9; PSC9; HsT17706
Accession No.	Swiss-Prot:P25789 Gene ID:5685
Uniprot	P25789
GeneID	5685;
Calculated MW	29 kDa
SDS-PAGE MW	29 kDa
Formulation	50mM Tris-Glycine(pH 7.4), 0.15M NaCl, 40% Glycerol, 0.01% Sodium azide and 0.05% BSA
Storage	Store at 4°C short term. Aliquot and store at -20°C long term. Avoid freeze/thaw cycles.

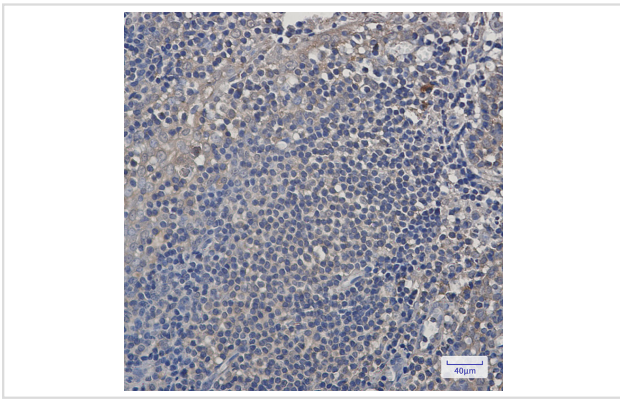
Application Details

IP: 1/20WB: 1/500-1/1000IHC: 1/50-1/100ICC: 1/50-1/200

Images



Western blot analysis of PSMA4 in K562, C6, 3T3, HeLa lysates using PSMA4 antibody.



Immunohistochemistry analysis of paraffin-embedded Human tonsil using PSMA4 antibody. High-pressure and temperature Sodium Citrate pH 6.0 was used for antigen retrieval.

Note: This product is for in vitro research use only