

## PSS2 Rabbit mAb

Catalog No: #57327

Package Size: #57327-1 50ul #57327-2 100ul

Orders: order@signalwayantibody.com

Support: tech@signalwayantibody.com

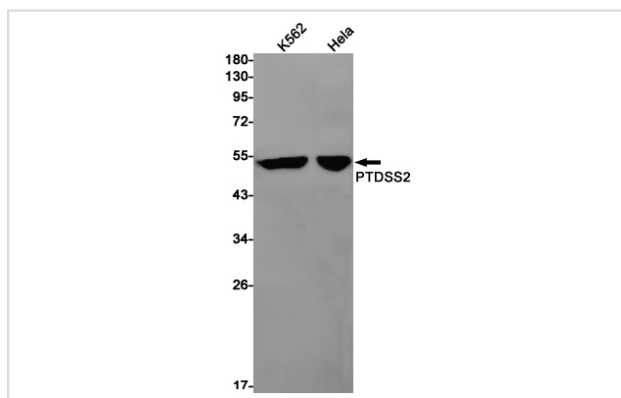
## Description

Product Name	PSS2 Rabbit mAb
Host Species	Rabbit
Clonality	Monoclonal
Isotype	Rabbit IgG
Applications	WB IP
Species Reactivity	Human
Immunogen Description	Recombinant protein of human PTDSS2
Other Names	PSS2
Accession No.	Swiss-Prot:Q9BVG9 Gene ID:81490
Uniprot	Q9BVG9
GeneID	81490;
Calculated MW	56 kDa
SDS-PAGE MW	56 kDa
Formulation	50mM Tris-Glycine(pH 7.4), 0.15M NaCl, 40% Glycerol, 0.01% Sodium azide and 0.05% BSA
Storage	Store at 4°C short term. Aliquot and store at -20°C long term. Avoid freeze/thaw cycles.

## Application Details

IP:1/20WB: 1/500-1/1000

## Images



Western blot analysis of PTDSS2 in K562, HeLa lysates using PSS2 antibody.

Note: This product is for in vitro research use only