

Rab10 Rabbit mAb

Catalog No: #57330

Package Size: #57330-1 50ul #57330-2 100ul

Orders: order@signalwayantibody.com

Support: tech@signalwayantibody.com

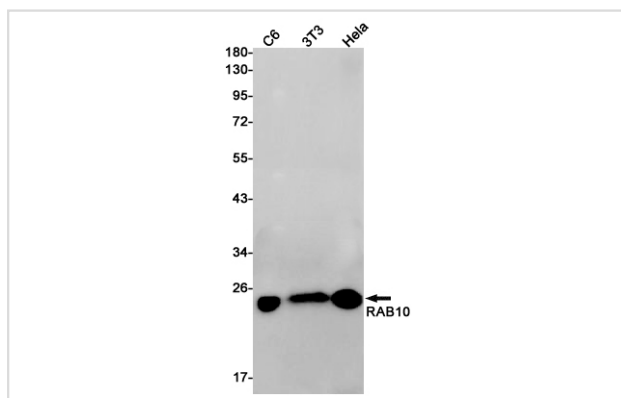
Description

Product Name	Rab10 Rabbit mAb
Host Species	Rabbit
Clonality	Monoclonal
Isotype	Rabbit IgG
Applications	WB IP ICC
Species Reactivity	Human,Mouse,Rat
Immunogen Description	Recombinant protein of human RAB10
Other Names	RAB10
Accession No.	Swiss-Prot:P61026 Gene ID:10890
Uniprot	P61026
GeneID	10890;
Calculated MW	23 kDa
SDS-PAGE MW	23 kDa
Formulation	50mM Tris-Glycine(pH 7.4), 0.15M NaCl, 40% Glycerol, 0.01% Sodium azide and 0.05% BSA
Storage	Store at 4°C short term. Aliquot and store at -20°C long term. Avoid freeze/thaw cycles.

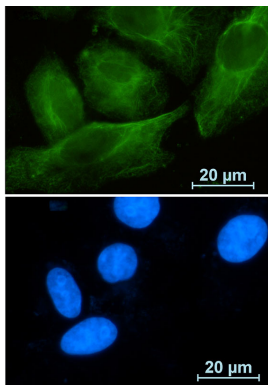
Application Details

IP: 1/20WB: 1/500-1/1000ICC: 1/50-1/200

Images



Western blot analysis of RAB10 in C6, 3T3, HeLa lysates using RAB10 antibody.



Immunocytochemistry analysis of Rab10 (green) in A549 using Rab10 antibody, and DAPI (blue).

Note: This product is for in vitro research use only