

## RAP1 Rabbit mAb

Catalog No: #57332

Package Size: #57332-1 50ul #57332-2 100ul

Orders: [order@signalwayantibody.com](mailto:order@signalwayantibody.com)Support: [tech@signalwayantibody.com](mailto:tech@signalwayantibody.com)

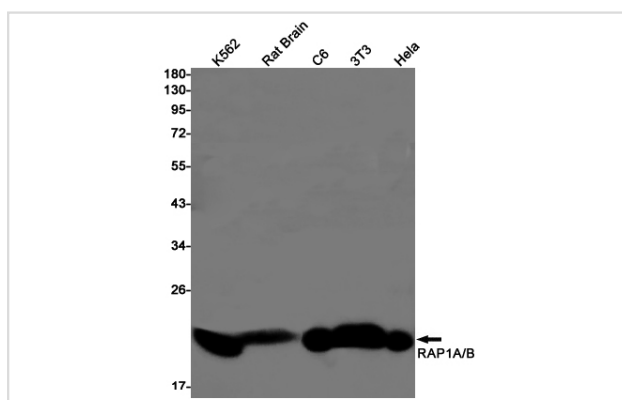
## Description

Product Name	RAP1 Rabbit mAb
Host Species	Rabbit
Clonality	Monoclonal
Isotype	Rabbit IgG
Applications	WB IP
Species Reactivity	Human,Mouse,Rat
Immunogen Description	A synthetic peptide of human RAP1A/B
Other Names	Ras-related protein Rap-1b; K-REV; RAL1B
Accession No.	Swiss-Prot:P61224 Gene ID:5908
Uniprot	P61224
GeneID	5908;
Calculated MW	21 kDa
SDS-PAGE MW	21 kDa
Formulation	50mM Tris-Glycine(pH 7.4), 0.15M NaCl, 40% Glycerol, 0.01% Sodium azide and 0.05% BSA
Storage	Store at 4°C short term. Aliquot and store at -20°C long term. Avoid freeze/thaw cycles.

## Application Details

IP:1/20WB: 1/500-1/1000

## Images



Western blot analysis of RAP1A/B in K562, rat Brain, C6, 3T3, HeLa lysates using RAP1 antibody.

Note: This product is for in vitro research use only