

RPS6 Rabbit mAb

Catalog No: #57333

Package Size: #57333-1 50ul #57333-2 100ul

Orders: order@signalwayantibody.com

Support: tech@signalwayantibody.com

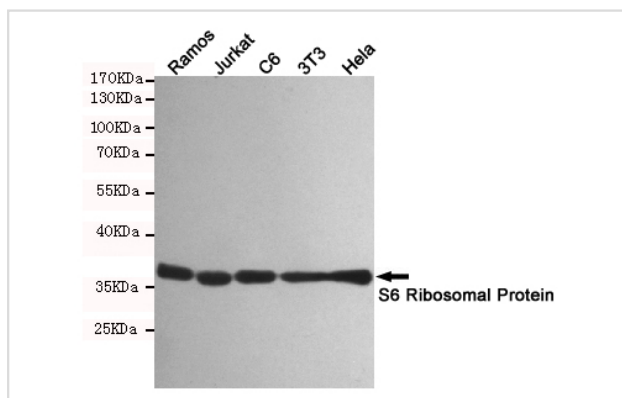
Description

Product Name	RPS6 Rabbit mAb
Host Species	Rabbit
Clonality	Monoclonal
Isotype	Rabbit IgG
Applications	WB IHC IP ICC
Species Reactivity	Human,Mouse,Rat
Immunogen Description	Synthetic peptide derived from human S6 Ribosomal Protein.
Other Names	RPS6; OK/SW-cl.2; 40S ribosomal protein S6; Phosphoprotein NP33
Accession No.	Swiss-Prot:P62753 Gene ID:6194
Uniprot	P62753
GeneID	6194;
Calculated MW	29 kDa
SDS-PAGE MW	29 kDa
Formulation	50mM Tris-Glycine(pH 7.4), 0.15M NaCl, 40% Glycerol, 0.01% Sodium azide and 0.05% BSA
Storage	Store at 4°C short term. Aliquot and store at -20°C long term. Avoid freeze/thaw cycles.

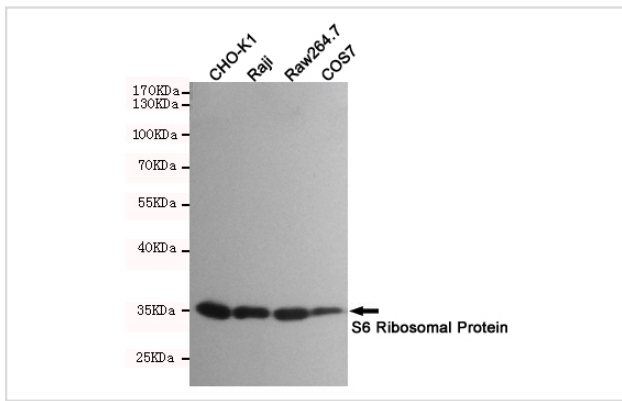
Application Details

IP: 1/20WB: 1/500-1/1000IHC: 1/50-1/100ICC: 1/50-1/200

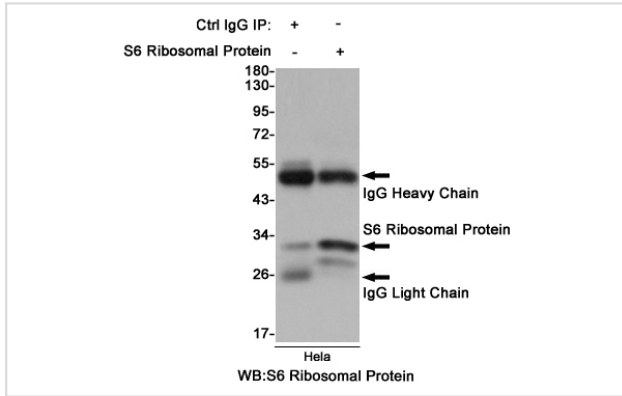
Images



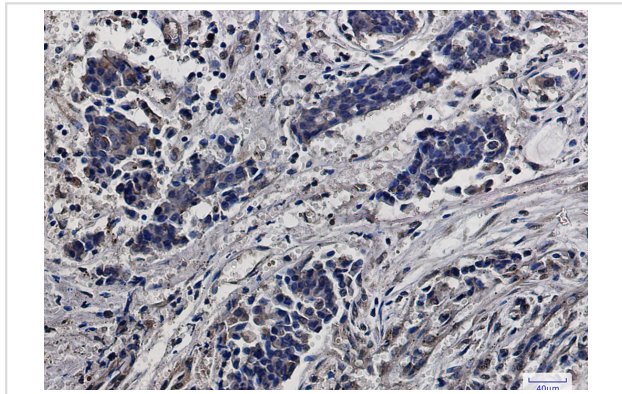
Western blot analysis of S6 Ribosomal Protein in Ramos, Jurkat, C6, 3T3 and HeLa lysates using S6 Ribosomal Protein antibody.



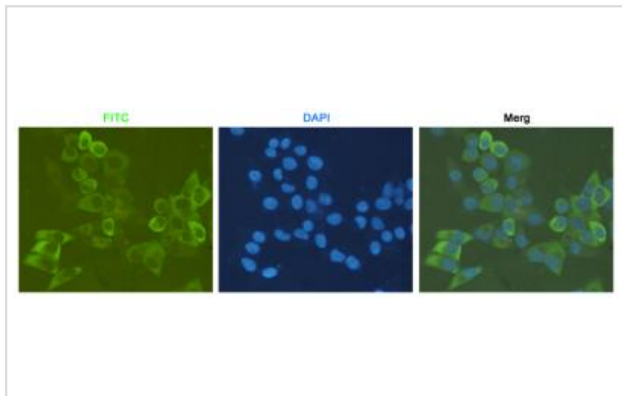
Western blot analysis of S6 Ribosomal Protein in CHO-K1, Raji, Raw264.7 and COS7 lysates using S6 Ribosomal Protein antibody.



Immunoprecipitation analysis of HeLa cell lysates using S6 Ribosomal Protein antibody.



Immunohistochemistry analysis of paraffin-embedded Human breast cancer using RPS6 antibody. High-pressure and temperature Sodium Citrate pH 6.0 was used for antigen retrieval.



Immunocytochemistry analysis of HeLa using antiS6 Ribosomal Protein antibody.

Note: This product is for in vitro research use only