

SC35 Rabbit mAb

Catalog No: #57335

Package Size: #57335-1 50ul #57335-2 100ul

Orders: order@signalwayantibody.com

Support: tech@signalwayantibody.com

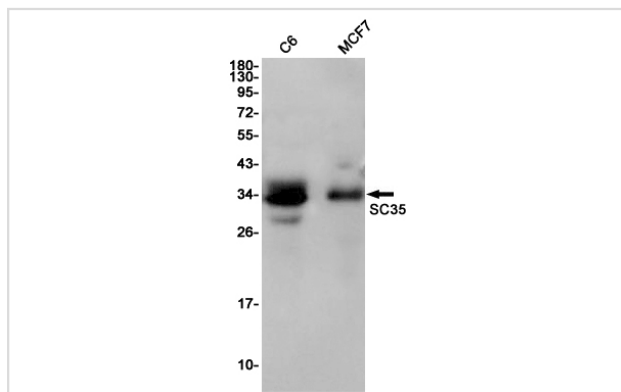
Description

Product Name	SC35 Rabbit mAb
Host Species	Rabbit
Clonality	Monoclonal
Isotype	Rabbit IgG
Applications	WB IHC IP
Species Reactivity	Human,Rat
Immunogen Description	A synthetic peptide of human SC35
Other Names	Protein PR264; Splicing component; 35 kDa; Splicing factor SC35; SC-35; Splicing factor; arginine/serine-rich 2
Accession No.	Swiss-Prot:Q01130 Gene ID:6427
Uniprot	Q01130
GeneID	6427;
Calculated MW	25 kDa
SDS-PAGE MW	35 kDa
Formulation	50mM Tris-Glycine(pH 7.4), 0.15M NaCl, 40% Glycerol, 0.01% Sodium azide and 0.05% BSA
Storage	Store at 4°C short term. Aliquot and store at -20°C long term. Avoid freeze/thaw cycles.

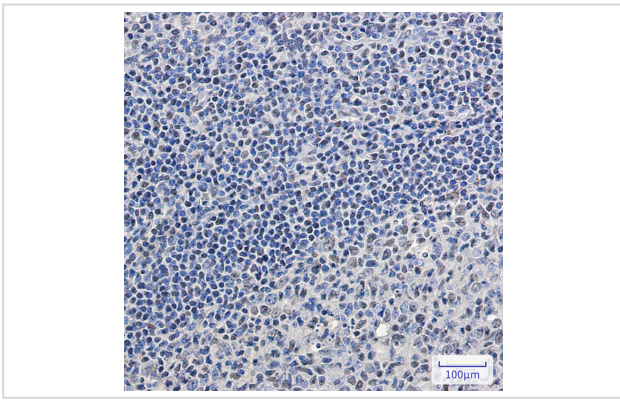
Application Details

IP:1/20WB: 1/500-1/1000IHC: 1/50-1/100

Images



Western blot analysis of SC35 in C6, MCF-7 lysates using SC35 antibody.



Immunohistochemistry analysis of paraffin-embedded Human tonsil using SC35 antibody. High-pressure and temperature Sodium Citrate pH 6.0 was used for antigen retrieval.

Note: This product is for in vitro research use only