

SCD1 Rabbit mAb

Catalog No: #57337

Package Size: #57337-1 50ul #57337-2 100ul

Orders: order@signalwayantibody.com

Support: tech@signalwayantibody.com

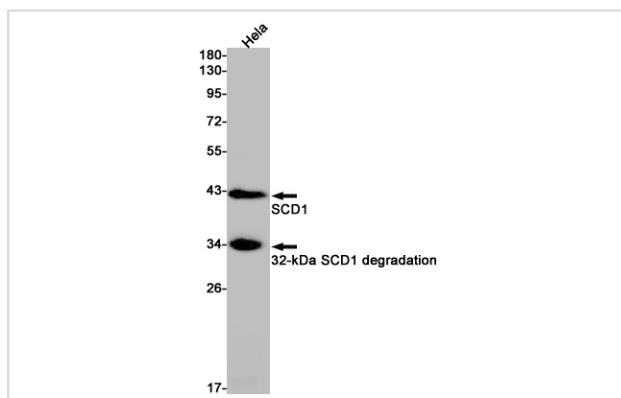
Description

Product Name	SCD1 Rabbit mAb
Host Species	Rabbit
Clonality	Monoclonal
Isotype	Rabbit IgG
Applications	WB IHC IP ICC
Species Reactivity	Human
Immunogen Description	Recombinant protein of human SCD1
Other Names	SCD1; FADS5; SCDOS; MSTP008
Accession No.	Swiss-Prot:O00767 Gene ID:6319
Uniprot	O00767
GeneID	6319;
Calculated MW	42 kDa
SDS-PAGE MW	37 kDa
Formulation	50mM Tris-Glycine(pH 7.4), 0.15M NaCl, 40% Glycerol, 0.01% Sodium azide and 0.05% BSA
Storage	Store at 4°C short term. Aliquot and store at -20°C long term. Avoid freeze/thaw cycles.

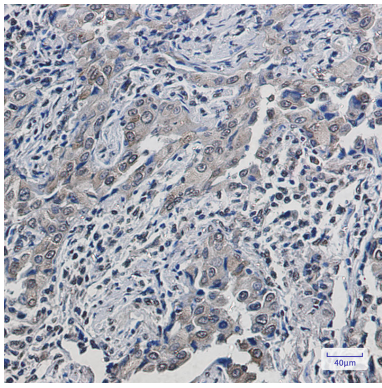
Application Details

IP: 1/20WB: 1/500-1/1000IHC: 1/50-1/100ICC: 1/50-1/200

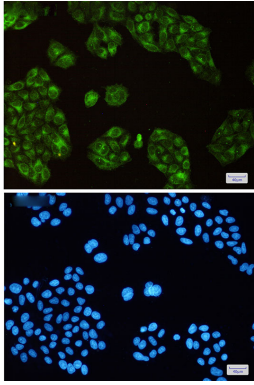
Images



Western blot analysis of SCD1 in HeLa lysates using SCD1 antibody.



Immunohistochemistry analysis of paraffin-embedded Human lung cancer using SCD1 antibody. High-pressure and temperature Sodium Citrate pH 6.0 was used for antigen retrieval.



Immunocytochemistry analysis of SCD1(green) in HeLa using SCD1 antibody, and DAPI(blue)

Note: This product is for in vitro research use only