

SEH1L Rabbit mAb

Catalog No: #57338

Package Size: #57338-1 50ul #57338-2 100ul

Orders: order@signalwayantibody.com

Support: tech@signalwayantibody.com

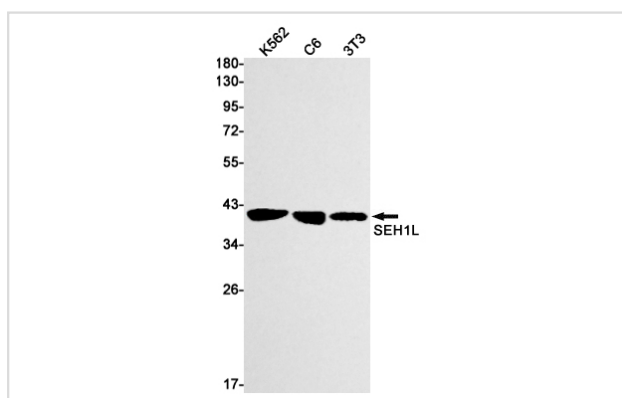
Description

Product Name	SEH1L Rabbit mAb
Host Species	Rabbit
Clonality	Monoclonal
Isotype	Rabbit IgG
Applications	WB IP
Species Reactivity	Human,Mouse,Rat
Immunogen Description	A synthetic peptide of mouse SEH1L
Other Names	GATOR complex protein SEH1; Nup107-160 subcomplex subunit SEH1
Accession No.	Swiss-Prot:Q8R2U0 Gene ID:72124
Uniprot	Q8R2U0
GeneID	72124;
Calculated MW	40 kDa
SDS-PAGE MW	40 kDa
Formulation	50mM Tris-Glycine(pH 7.4), 0.15M NaCl, 40% Glycerol, 0.01% Sodium azide and 0.05% BSA
Storage	Store at 4°C short term. Aliquot and store at -20°C long term. Avoid freeze/thaw cycles.

Application Details

IP:1/20WB: 1/500-1/1000

Images



Western blot analysis of SEH1L in K562, C6, 3T3 lysates using SEH1L antibody.

Note: This product is for in vitro research use only