

SNX9 Rabbit mAb

Catalog No: #57339

Package Size: #57339-1 50ul #57339-2 100ul

Orders: order@signalwayantibody.com

Support: tech@signalwayantibody.com

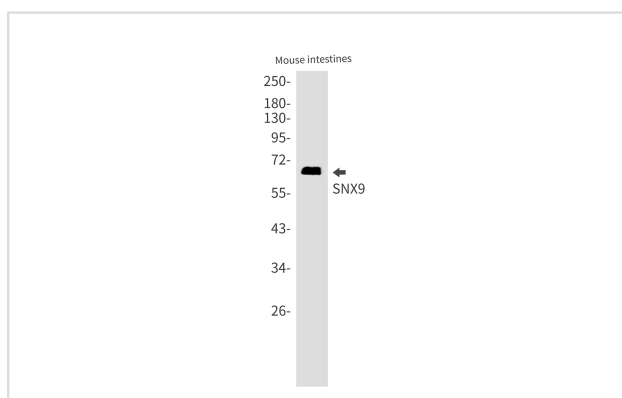
Description

Product Name	SNX9 Rabbit mAb
Host Species	Rabbit
Clonality	Monoclonal
Isotype	Rabbit IgG
Applications	WB IHC IP ICC
Species Reactivity	Human,Mouse
Immunogen Description	Recombinant protein of human SH3PX1
Other Names	SDP1; WISP; SH3PX1; SH3PXD3A
Accession No.	Swiss-Prot:Q9Y5X1 Gene ID:51429
Uniprot	Q9Y5X1
GeneID	51429;
Calculated MW	67 kDa
SDS-PAGE MW	67 kDa
Formulation	50mM Tris-Glycine(pH 7.4), 0.15M NaCl, 40% Glycerol, 0.01% Sodium azide and 0.05% BSA
Storage	Store at 4°C short term. Aliquot and store at -20°C long term. Avoid freeze/thaw cycles.

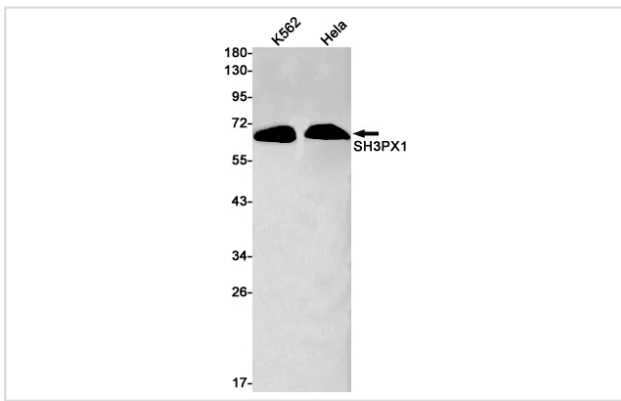
Application Details

IP: 1/20WB: 1/500-1/1000IHC: 1/50-1/100ICC: 1/50-1/200

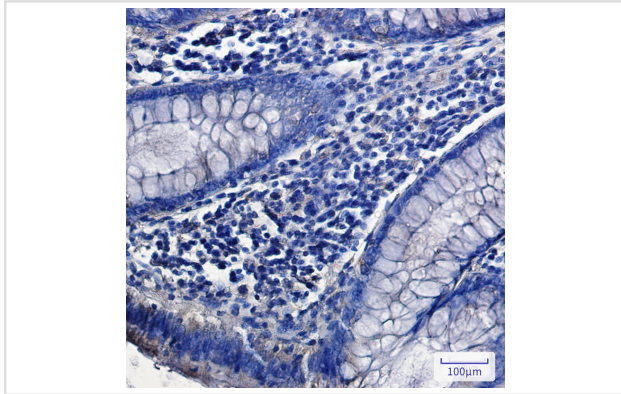
Images



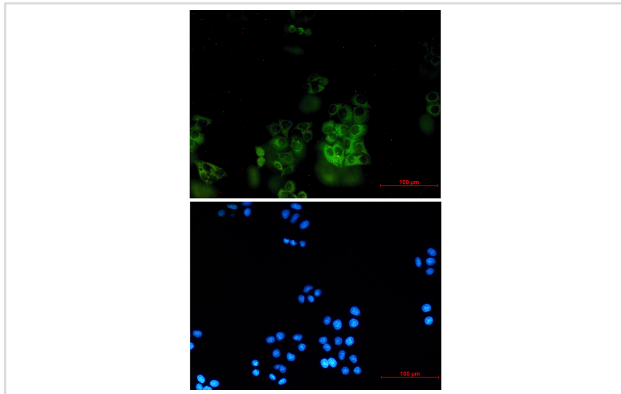
Western blot analysis of SNX9 in mouse intestines lysates using SNX9 antibody.



Western blot analysis of SH3PX1 in K562, HeLa lysates using SH3PX1 antibody.



Immunohistochemistry analysis of paraffin-embedded Human colon cancer using SNX9 antibody. High-pressure and temperature Sodium Citrate pH 6.0 was used for antigen retrieval.



Immunocytochemistry analysis of SNX9 (green) in HeLa using SNX9 antibody, and DAPI (blue).

Note: This product is for in vitro research use only