

## SLAMF6 Rabbit mAb

Catalog No: #57341

Package Size: #57341-1 50ul #57341-2 100ul

Orders: [order@signalwayantibody.com](mailto:order@signalwayantibody.com)Support: [tech@signalwayantibody.com](mailto:tech@signalwayantibody.com)

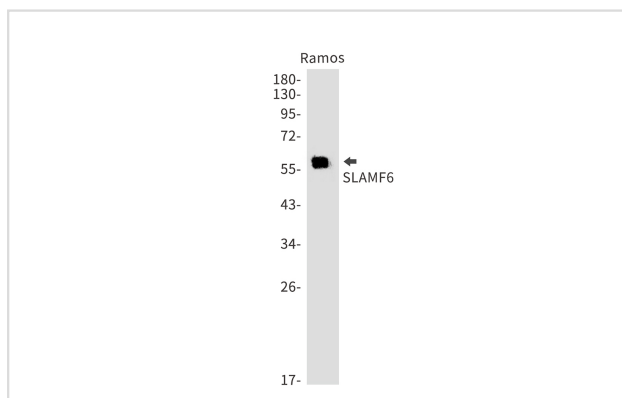
## Description

Product Name	SLAMF6 Rabbit mAb
Host Species	Rabbit
Clonality	Monoclonal
Isotype	Rabbit IgG
Applications	WB IP ICC
Species Reactivity	Human
Immunogen Description	Recombinant protein of human SLAMF6
Other Names	NTB-A; SLAMF6; Ly108; NK-T-B-antigen; CD352; KALI
Accession No.	Swiss-Prot:Q96DU3 Gene ID:114836
Uniprot	Q96DU3
GeneID	114836;
Calculated MW	37 kDa
SDS-PAGE MW	60 kDa
Formulation	50mM Tris-Glycine(pH 7.4), 0.15M NaCl, 40% Glycerol, 0.01% Sodium azide and 0.05% BSA
Storage	Store at 4°C short term. Aliquot and store at -20°C long term. Avoid freeze/thaw cycles.

## Application Details

IP:1/20WB: 1/500-1/1000ICC: 1/50-1/200

## Images



Western blot analysis of SLAMF6 in Ramos lysates using SLAMF6 antibody.

Note: This product is for in vitro research use only