

SSX2IP Rabbit mAb

Catalog No: #57346

Package Size: #57346-1 50ul #57346-2 100ul

Orders: order@signalwayantibody.com

Support: tech@signalwayantibody.com

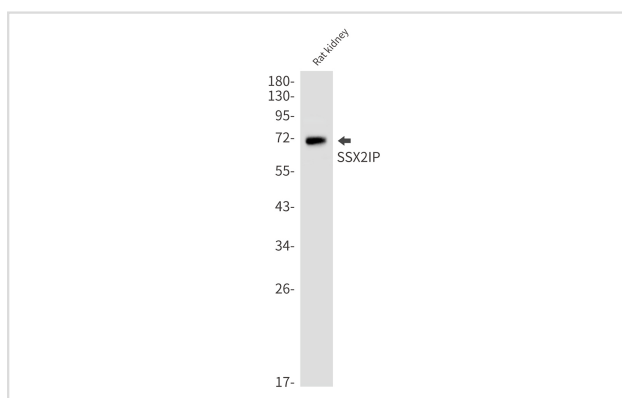
Description

Product Name	SSX2IP Rabbit mAb
Host Species	Rabbit
Clonality	Monoclonal
Isotype	Rabbit IgG
Applications	WB IHC ICC
Species Reactivity	Human,Rat
Immunogen Description	A synthetic peptide of human SSX2IP
Other Names	ADIP; hMsd1
Accession No.	Swiss-Prot:Q9Y2D8 Gene ID:117178
Uniprot	Q9Y2D8
GeneID	117178;
Calculated MW	71 kDa
SDS-PAGE MW	71 kDa
Formulation	50mM Tris-Glycine(pH 7.4), 0.15M NaCl, 40% Glycerol, 0.01% Sodium azide and 0.05% BSA
Storage	Store at 4°C short term. Aliquot and store at -20°C long term. Avoid freeze/thaw cycles.

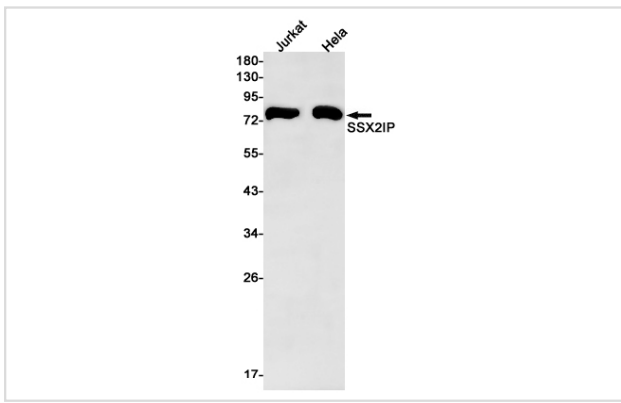
Application Details

WB: 1/500-1/1000IHC: 1/50-1/100ICC: 1/50-1/200

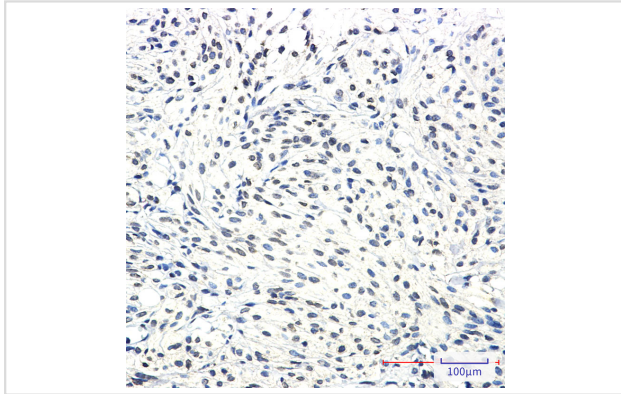
Images



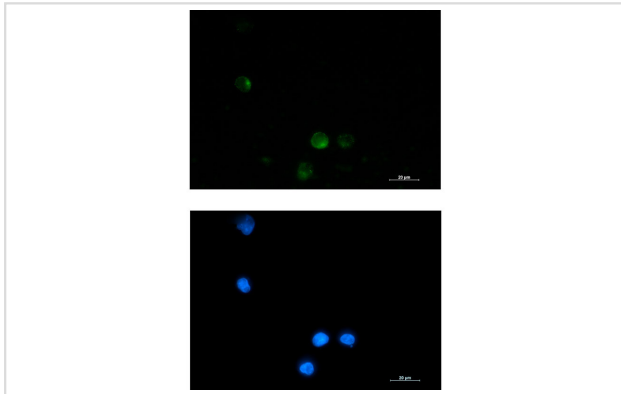
Western blot analysis of SSX2IP in rat kidney lysates using SSX2IP antibody.



Western blot analysis of SSX2IP in Jurkat, HeLa lysates using SSX2IP antibody



Immunohistochemistry analysis of paraffin-embedded Human Brain using SSX2IP antibody. High-pressure and temperature Sodium Citrate pH 6.0 was used for antigen retrieval.



Immunocytochemistry analysis of SSX2IP (green) in K562 using SSX2IP antibody, and DAPI (blue).

Note: This product is for in vitro research use only