

## Thioredoxin Like Protein 1 Rabbit mAb

Catalog No: #57357

Package Size: #57357-1 50ul #57357-2 100ul

Orders: order@signalwayantibody.com

Support: tech@signalwayantibody.com

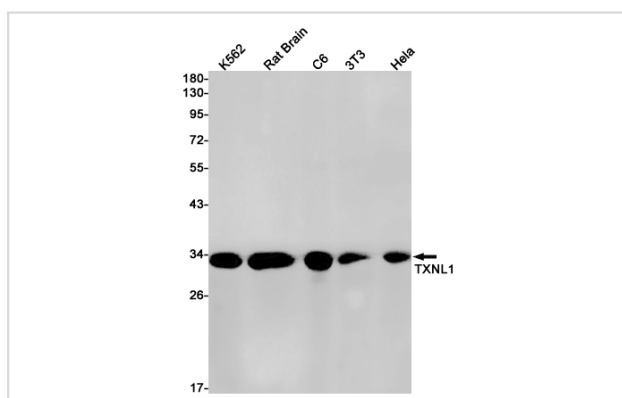
## Description

Product Name	Thioredoxin Like Protein 1 Rabbit mAb
Host Species	Rabbit
Clonality	Monoclonal
Isotype	Rabbit IgG
Applications	WB IHC ICC
Species Reactivity	Human,Mouse,Rat
Immunogen Description	A synthetic peptide of human TXNL1
Other Names	Txl; TXNL; TRP32; TXL-1; HEL-S-114
Accession No.	Swiss-Prot:O43396 Gene ID:9352
Uniprot	O43396
GeneID	9352;
Calculated MW	32 kDa
SDS-PAGE MW	32 kDa
Formulation	50mM Tris-Glycine(pH 7.4), 0.15M NaCl, 40% Glycerol, 0.01% Sodium azide and 0.05% BSA
Storage	Store at 4°C short term. Aliquot and store at -20°C long term. Avoid freeze/thaw cycles.

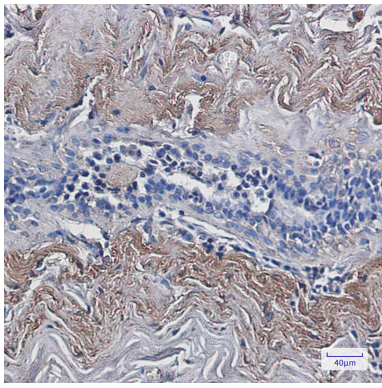
## Application Details

WB: 1/500-1/1000 IHC: 1/50-1/100 ICC: 1/50-1/200

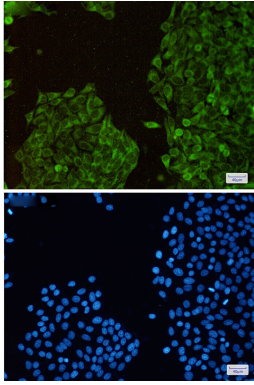
## Images



Western blot analysis of TXNL1 in K562, rat Brain, C6, 3T3, HeLa lysates using Thioredoxin Like Protein 1 antibody.



Immunohistochemistry analysis of paraffin-embedded Human breast cancer using TXNL1 antibody. High-pressure and temperature Sodium Citrate pH 6.0 was used for antigen retrieval.



Immunocytochemistry analysis of TXNL1 (green) in Hela using TXNL1 antibody, and DAPI (blue)

---

Note: This product is for in vitro research use only