

Tight Junction Protein ZO 3 Rabbit mAb

Catalog No: #57364

Package Size: #57364-1 50ul #57364-2 100ul

Orders: order@signalwayantibody.com

Support: tech@signalwayantibody.com

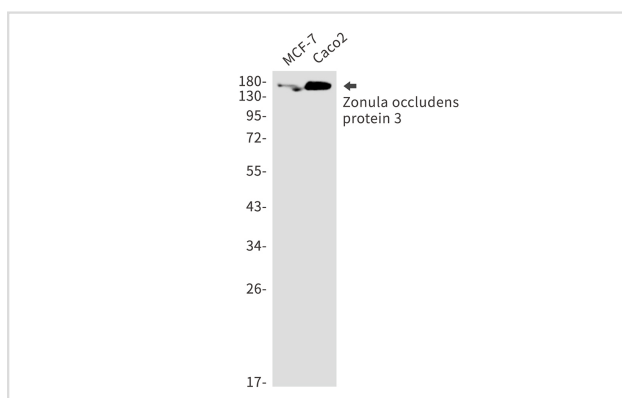
Description

| | |
|-----------------------|--|
| Product Name | Tight Junction Protein ZO 3 Rabbit mAb |
| Host Species | Rabbit |
| Clonality | Monoclonal |
| Isotype | Rabbit IgG |
| Applications | WB |
| Species Reactivity | Human,Rat |
| Immunogen Description | A synthetic peptide of human Zonula occludens protein 3 |
| Other Names | ZO3; ZO-3 |
| Accession No. | Swiss-Prot:O95049 Gene ID:27134 |
| Uniprot | O95049 |
| GeneID | 27134; |
| Calculated MW | 101 kDa |
| SDS-PAGE MW | 140 kDa |
| Formulation | 50mM Tris-Glycine(pH 7.4), 0.15M NaCl, 40% Glycerol, 0.01% Sodium azide and 0.05% BSA |
| Storage | Store at 4°C short term. Aliquot and store at -20°C long term. Avoid freeze/thaw cycles. |

Application Details

WB: 1/500-1/1000

Images



Western blot analysis of Zonula occludens protein 3 in MCF-7, Caco2 lysates using Tight Junction Protein ZO 3 antibody.

Note: This product is for in vitro research use only