

## OR1A1 Rabbit mAb

Catalog No: #57365

Package Size: #57365-1 50ul #57365-2 100ul

Orders: order@signalwayantibody.com

Support: tech@signalwayantibody.com

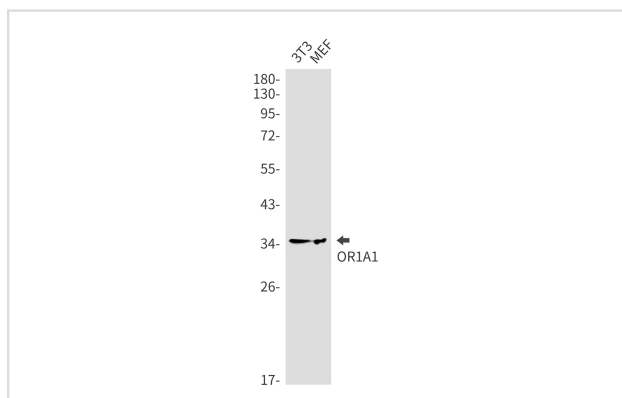
## Description

Product Name	OR1A1 Rabbit mAb
Host Species	Rabbit
Clonality	Monoclonal
Isotype	Rabbit IgG
Applications	WB IP
Species Reactivity	Human,Mouse,Rat
Immunogen Description	A synthetic peptide of human OR1A1
Other Names	OR17-7
Accession No.	Swiss-Prot:Q9P1Q5 Gene ID:8383
Uniprot	Q9P1Q5
GeneID	8383;
Calculated MW	35 kDa
SDS-PAGE MW	35 kDa
Formulation	50mM Tris-Glycine(pH 7.4), 0.15M NaCl, 40% Glycerol, 0.01% Sodium azide and 0.05% BSA
Storage	Store at 4°C short term. Aliquot and store at -20°C long term. Avoid freeze/thaw cycles.

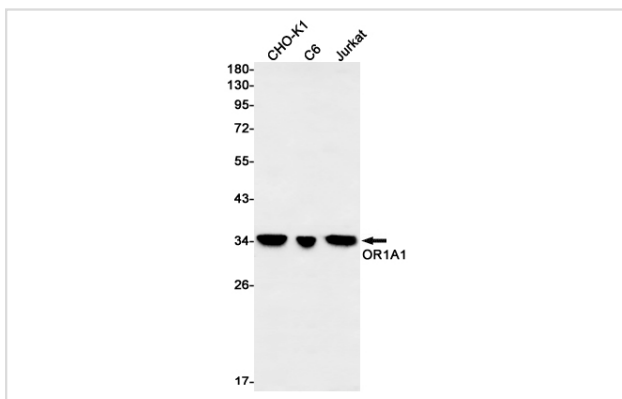
## Application Details

IP:1/20WB: 1/500-1/1000

## Images



Western blot analysis of OR1A1 in 3T3, MEF lysates using OR1A1 antibody.



Western blot analysis of OR1A1 in CHO-K1, C6, Jurkat lysates using OR1A1 antibody.

---

Note: This product is for in vitro research use only