

Integrin alpha L Rabbit mAb

Catalog No: #57371

Package Size: #57371-1 50ul #57371-2 100ul

Orders: order@signalwayantibody.com

Support: tech@signalwayantibody.com

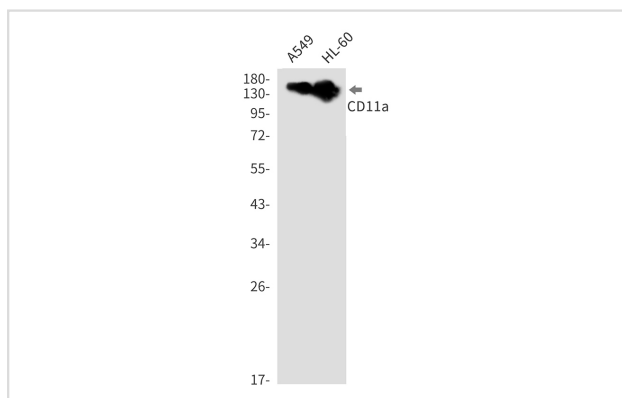
Description

Product Name	Integrin alpha L Rabbit mAb
Host Species	Rabbit
Clonality	Monoclonal
Isotype	Rabbit IgG
Applications	WB IHC
Species Reactivity	Human,Mouse
Immunogen Description	Recombinant protein of mouse CD11a
Other Names	Cd11a; LFA-1; Ly-15; Ly-21; (p180); LFA-1A
Accession No.	Swiss-Prot:P24063 Gene ID:16408
Uniprot	P24063
GeneID	16408;
Calculated MW	128 kDa
SDS-PAGE MW	160 kDa
Formulation	50mM Tris-Glycine(pH 7.4), 0.15M NaCl, 40% Glycerol, 0.01% Sodium azide and 0.05% BSA
Storage	Store at 4°C short term. Aliquot and store at -20°C long term. Avoid freeze/thaw cycles.

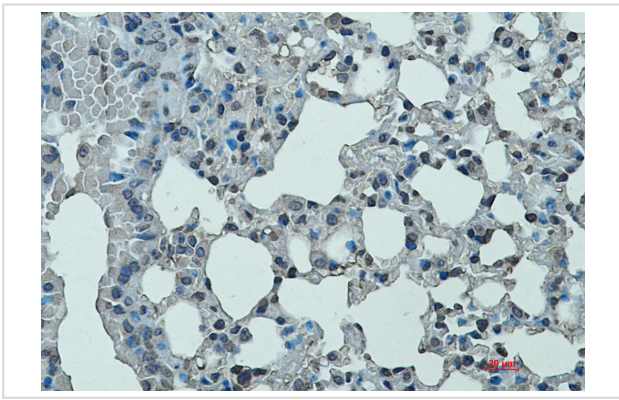
Application Details

WB: 1/500-1/1000IHC: 1/50-1/100

Images



Western blot analysis of CD11a in A549, HL-60 lysates using CD11a antibody.



Immunohistochemistry analysis of paraffin-embedded mouse lung using Integrin alpha L antibody. High-pressure and temperature Sodium Citrate pH 6.0 was used for antigen retrieval.

Note: This product is for in vitro research use only