

CLIC1 Rabbit mAb

Catalog No: #57372

Package Size: #57372-1 50ul #57372-2 100ul

Orders: order@signalwayantibody.com

Support: tech@signalwayantibody.com

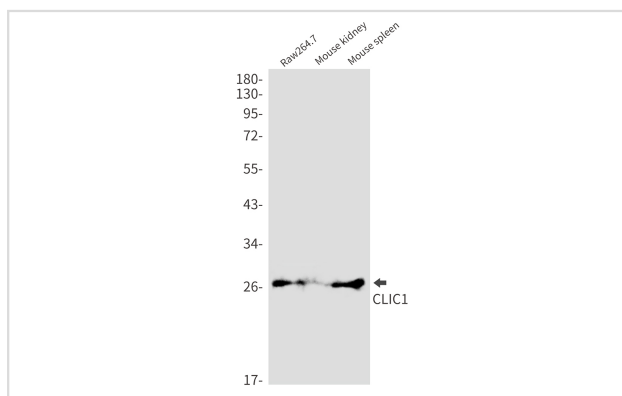
Description

Product Name	CLIC1 Rabbit mAb
Host Species	Rabbit
Clonality	Monoclonal
Isotype	Rabbit IgG
Applications	WB IP ICC
Species Reactivity	Human,Mouse,Rat,Hamster
Immunogen Description	Recombinant protein of human CLIC1
Other Names	Chloride intracellular channel protein 1; Chloride channel ABP; Nuclear chloride ion channel 27; NCC27; Regulatory nuclear chloride ion channel protein; hRNCC
Accession No.	Swiss-Prot:O00299 Gene ID:1192
Uniprot	O00299
GeneID	1192;
Calculated MW	27 kDa
SDS-PAGE MW	27 kDa
Formulation	50mM Tris-Glycine(pH 7.4), 0.15M NaCl, 40% Glycerol, 0.01% Sodium azide and 0.05% BSA
Storage	Store at 4°C short term. Aliquot and store at -20°C long term. Avoid freeze/thaw cycles.

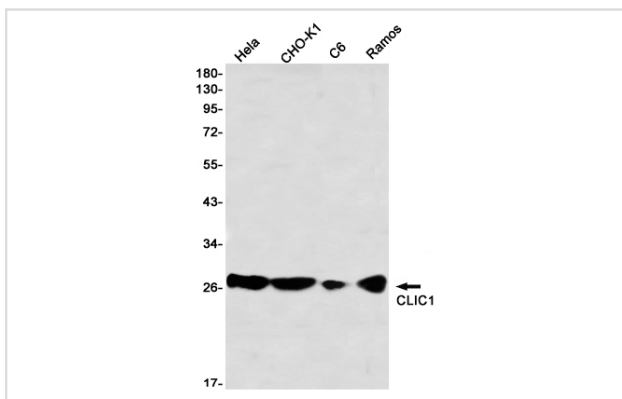
Application Details

IP:1/20WB: 1/500-1/1000ICC: 1/50-1/200

Images



Western blot analysis of CLIC1 in Raw264.7, mouse kidney, mouse spleen lysates using CLIC1 antibody.



Western blot analysis of CLIC1 in HeLa, CHO-K1, C6, Ramos lysates using CLIC1 antibody

Note: This product is for in vitro research use only