

DAB2 Rabbit mAb

Catalog No: #57373

Package Size: #57373-1 50ul #57373-2 100ul

Orders: order@signalwayantibody.com

Support: tech@signalwayantibody.com

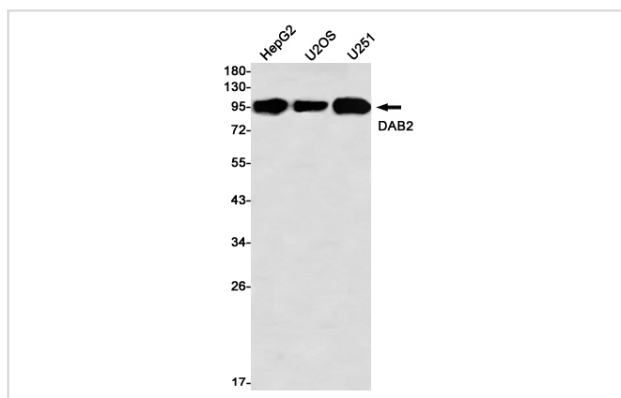
Description

| | |
|-----------------------|--|
| Product Name | DAB2 Rabbit mAb |
| Host Species | Rabbit |
| Clonality | Monoclonal |
| Isotype | Rabbit IgG |
| Applications | WB IHC IP |
| Species Reactivity | Human |
| Immunogen Description | A synthetic peptide of human DAB2 |
| Other Names | DOC2; DOC-2 |
| Accession No. | Swiss-Prot:P98082 Gene ID:1601 |
| Uniprot | P98082 |
| GeneID | 1601; |
| Calculated MW | 82 kDa |
| SDS-PAGE MW | 96 kDa |
| Formulation | 50mM Tris-Glycine(pH 7.4), 0.15M NaCl, 40% Glycerol, 0.01% Sodium azide and 0.05% BSA |
| Storage | Store at 4°C short term. Aliquot and store at -20°C long term. Avoid freeze/thaw cycles. |

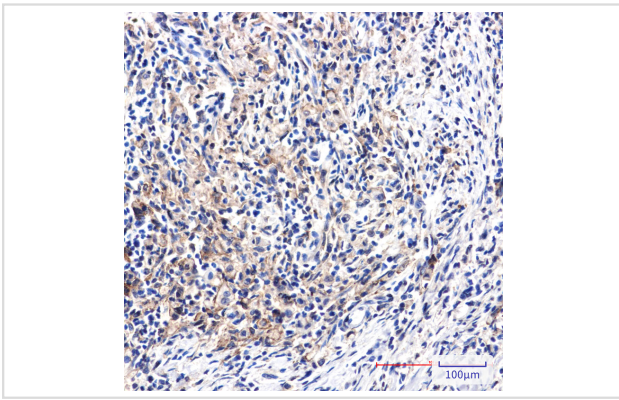
Application Details

IP: 1/20WB: 1/500-1/1000IHC: 1/50-1/100

Images



Western blot analysis of DAB2 in HepG2, U2OS, U251 lysates using DAB2 antibody.



Immunohistochemistry analysis of paraffin-embedded Human lung cancer using DAB2 antibody. High-pressure and temperature Sodium Citrate pH 6.0 was used for antigen retrieval.

Note: This product is for in vitro research use only