

## Elongation Factor 1A2 Rabbit mAb

Catalog No: #57374

Package Size: #57374-1 50ul #57374-2 100ul

Orders: order@signalwayantibody.com

Support: tech@signalwayantibody.com

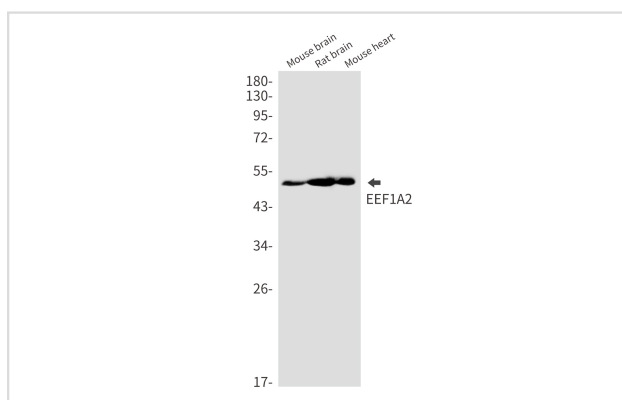
## Description

|                       |  |
|-----------------------|--|
| Product Name          | Elongation Factor 1A2 Rabbit mAb   |
| Host Species          | Rabbit   |
| Clonality             | Monoclonal   |
| Isotype               | Rabbit IgG   |
| Applications          | WB IP  |
| Species Reactivity    | Human,Mouse,Rat  |
| Immunogen Description | A synthetic peptide of human EEF1A2  |
| Other Names           | HS1; STN; EF1A; STNL; MRD38; EEF1AL; EIEE33; EF-1-alpha-2                                |
| Accession No.         | Swiss-Prot:Q05639 Gene ID:1917   |
| Uniprot               | Q05639   |
| GeneID                | 1917;  |
| Calculated MW         | 50 kDa   |
| SDS-PAGE MW           | 50 kDa   |
| Formulation           | 50mM Tris-Glycine(pH 7.4), 0.15M NaCl, 40% Glycerol, 0.01% Sodium azide and 0.05% BSA    |
| Storage               | Store at 4°C short term. Aliquot and store at -20°C long term. Avoid freeze/thaw cycles. |

## Application Details

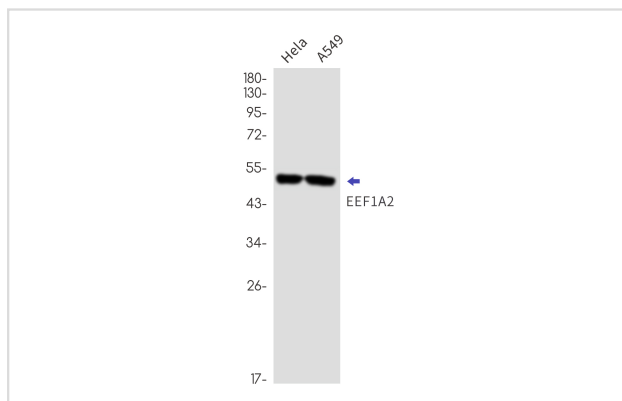
IP:1/20WB: 1/500-1/1000

## Images



Western blot analysis of EEF1A2 in mouse brain, rat brain, mouse heart lysates using Elongation Factor 1A2 antibody.

Western blot analysis of EEF1A2 in HeLa, A549 lysates using EEF1A2 antibody.



Note: This product is for in vitro research use only