

## EFEMP1 Rabbit mAb

Catalog No: #57375

Package Size: #57375-1 50ul #57375-2 100ul

Orders: order@signalwayantibody.com

Support: tech@signalwayantibody.com

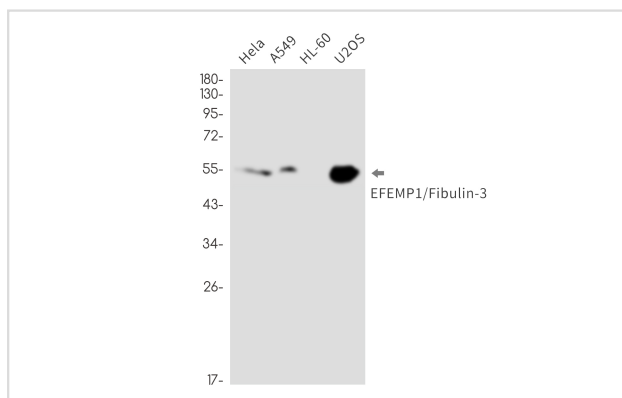
## Description

Product Name	EFEMP1 Rabbit mAb
Host Species	Rabbit
Clonality	Monoclonal
Isotype	Rabbit IgG
Applications	WB IHC IP
Species Reactivity	Human
Immunogen Description	Recombinant protein of human EFEMP1/Fibulin-3
Other Names	DHRD; DRAD; FBNL; MLVT; MTLV; S1-5; FBLN3; FIBL-3; Fibulin-3
Accession No.	Swiss-Prot:Q12805 Gene ID:2202
Uniprot	Q12805
GeneID	2202;
Calculated MW	55 kDa
SDS-PAGE MW	55 kDa
Formulation	50mM Tris-Glycine(pH 7.4), 0.15M NaCl, 40% Glycerol, 0.01% Sodium azide and 0.05% BSA
Storage	Store at 4°C short term. Aliquot and store at -20°C long term. Avoid freeze/thaw cycles.

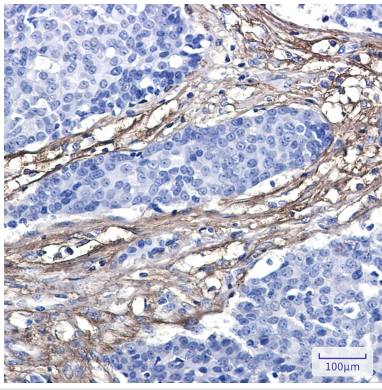
## Application Details

IP:1/20WB: 1/500-1/1000IHC: 1/50-1/100

## Images



Western blot analysis of EFEMP1/Fibulin-3 in HeLa, A549, HL-60, U2OS lysates using EFEMP1 antibody.



Immunohistochemistry analysis of paraffin-embedded Human breast cancer using EFEMP1/Fibulin3 antibody. High-pressure and temperature Sodium Citrate pH 6.0 was used for antigen retrieval.

---

Note: This product is for in vitro research use only