

HKDC1 Rabbit mAb

Catalog No: #57377

Package Size: #57377-1 50ul #57377-2 100ul

Orders: order@signalwayantibody.com

Support: tech@signalwayantibody.com

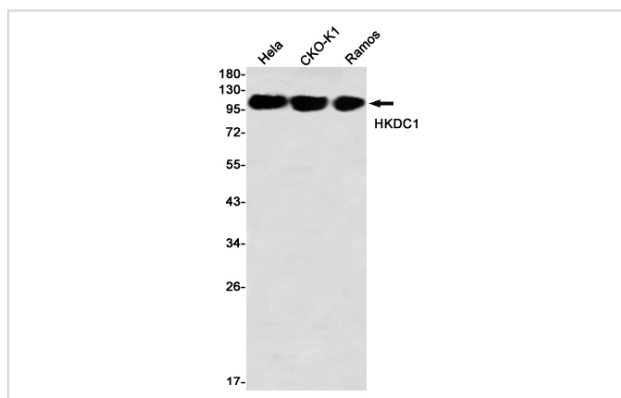
Description

Product Name	HKDC1 Rabbit mAb
Host Species	Rabbit
Clonality	Monoclonal
Isotype	Rabbit IgG
Applications	WB IP
Species Reactivity	Human
Immunogen Description	Recombinant protein of human HKDC1
Other Names	Hexokinase domain-containing protein 1
Accession No.	Swiss-Prot:Q2TB90 Gene ID:80201
Uniprot	Q2TB90
GeneID	80201;
Calculated MW	103 kDa
SDS-PAGE MW	103 kDa
Formulation	50mM Tris-Glycine(pH 7.4), 0.15M NaCl, 40% Glycerol, 0.01% Sodium azide and 0.05% BSA
Storage	Store at 4°C short term. Aliquot and store at -20°C long term. Avoid freeze/thaw cycles.

Application Details

IP:1/20WB: 1/500-1/1000

Images



Western blot analysis of HKDC1 in HeLa, CHO-K1, Ramos lysates using HKDC1 antibody.

Note: This product is for in vitro research use only