

Keap1 Rabbit mAb

Catalog No: #57379

Package Size: #57379-1 50ul #57379-2 100ul

Orders: order@signalwayantibody.com

Support: tech@signalwayantibody.com

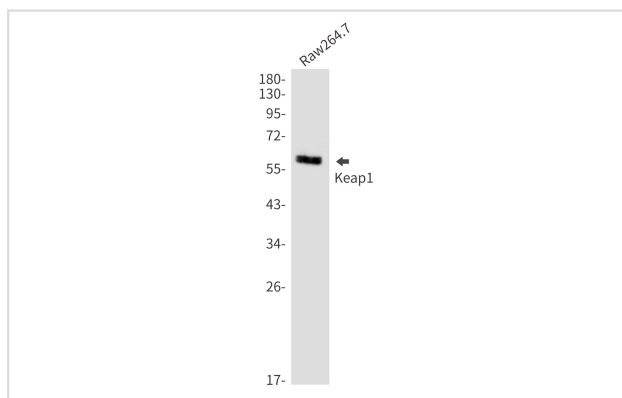
Description

Product Name	Keap1 Rabbit mAb
Host Species	Rabbit
Clonality	Monoclonal
Isotype	Rabbit IgG
Applications	WB IHC
Species Reactivity	Human,Mouse
Immunogen Description	Recombinant protein of human Keap1
Other Names	INrf2; KLHL19
Accession No.	Swiss-Prot:Q14145 Gene ID:9817
Uniprot	Q14145
GeneID	9817;
Calculated MW	70 kDa
SDS-PAGE MW	60-64 kDa
Formulation	50mM Tris-Glycine(pH 7.4), 0.15M NaCl, 40% Glycerol, 0.01% Sodium azide and 0.05% BSA
Storage	Store at 4°C short term. Aliquot and store at -20°C long term. Avoid freeze/thaw cycles.

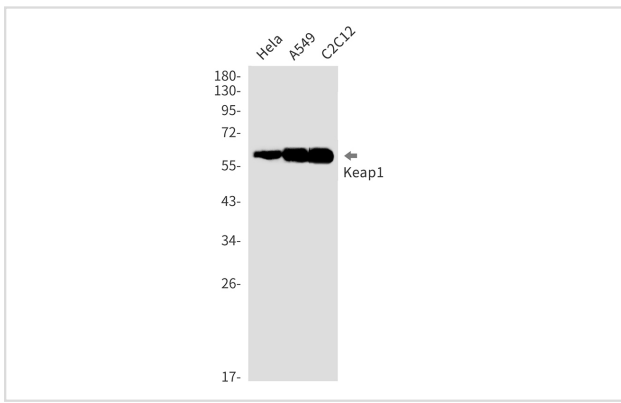
Application Details

WB: 1/500-1/1000IHC: 1/50-1/100

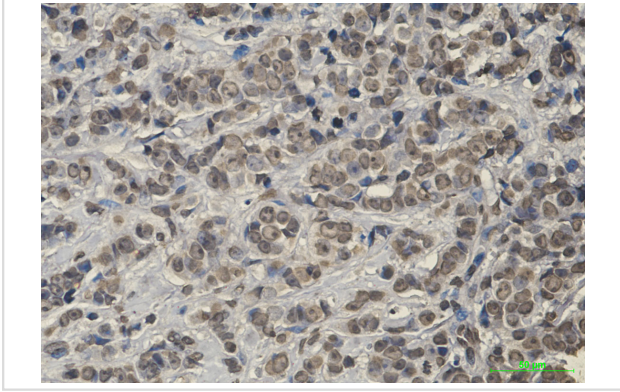
Images



Western blot analysis of Keap1 in Raw264.7 lysates using Keap1 antibody.



Western blot analysis of Keap1 in HeLa, A549, C2C12 lysates using Keap1 antibody.



Immunohistochemistry analysis of paraffin-embedded Human breast cancer using Keap1 antibody. High-pressure and temperature Sodium Citrate pH 6.0 was used for antigen retrieval.

Note: This product is for in vitro research use only