

NME3 Rabbit mAb

Catalog No: #57383

Package Size: #57383-1 50ul #57383-2 100ul

Orders: order@signalwayantibody.com

Support: tech@signalwayantibody.com

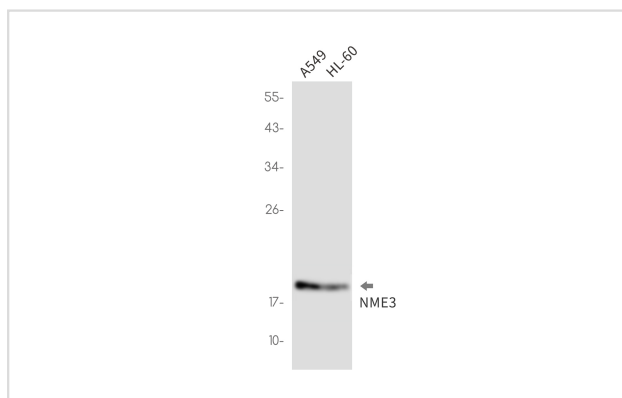
Description

Product Name	NME3 Rabbit mAb
Host Species	Rabbit
Clonality	Monoclonal
Isotype	Rabbit IgG
Applications	WB IHC IP
Species Reactivity	Human
Immunogen Description	A synthetic peptide of human NME3
Other Names	NDPKC; NDPK-C; NM23H3; DR-nm23; NM23-H3; c371H6.2
Accession No.	Swiss-Prot:Q13232 Gene ID:4832
Uniprot	Q13232
GeneID	4832;
Calculated MW	19 kDa
SDS-PAGE MW	19 kDa
Formulation	50mM Tris-Glycine(pH 7.4), 0.15M NaCl, 40% Glycerol, 0.01% Sodium azide and 0.05% BSA
Storage	Store at 4°C short term. Aliquot and store at -20°C long term. Avoid freeze/thaw cycles.

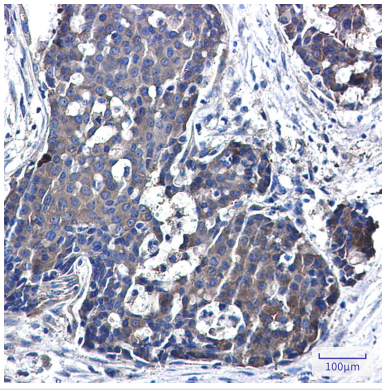
Application Details

IP: 1/20WB: 1/500-1/1000IHC: 1/50-1/100

Images



Western blot analysis of NME3 in A549, HL-60 lysates using NME3 antibody.



Immunohistochemistry analysis of paraffin-embedded Human breast cancer using NME3 antibody. High-pressure and temperature Sodium Citrate pH 6.0 was used for antigen retrieval.

Note: This product is for in vitro research use only