

Protein CASP Rabbit mAb

Catalog No: #57388

Package Size: #57388-1 50ul #57388-2 100ul

Orders: order@signalwayantibody.com

Support: tech@signalwayantibody.com

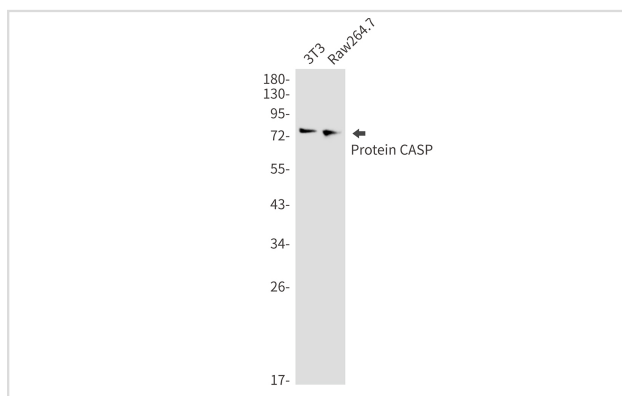
Description

Product Name	Protein CASP Rabbit mAb
Host Species	Rabbit
Clonality	Monoclonal
Isotype	Rabbit IgG
Applications	WB IP ICC
Species Reactivity	Human,Mouse,Rat
Immunogen Description	Recombinant protein of human Protein CASP
Other Names	CDP; CUX; p75; CASP; CDP1; COY1; Clox; GDDI; p100; p110; p200; CUTL1; GOLIM6; CDP/Cut; Cux/CDP; Nbla10317
Accession No.	Swiss-Prot:Q13948 Gene ID:1523
Uniprot	Q13948
GeneID	1523;
Calculated MW	77 kDa
SDS-PAGE MW	77 kDa
Formulation	50mM Tris-Glycine(pH 7.4), 0.15M NaCl, 40% Glycerol, 0.01% Sodium azide and 0.05% BSA
Storage	Store at 4°C short term. Aliquot and store at -20°C long term. Avoid freeze/thaw cycles.

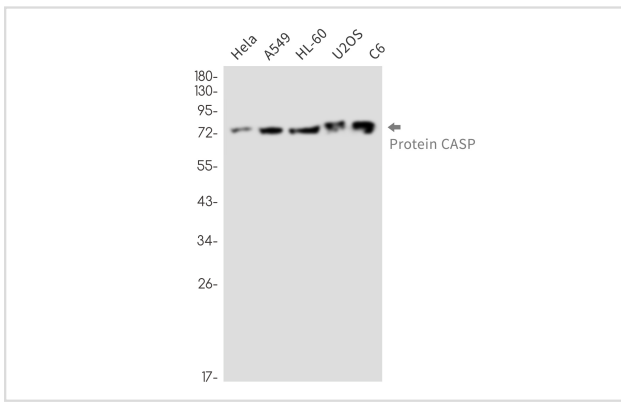
Application Details

IP:1/20WB: 1/500-1/1000ICC: 1/50-1/200

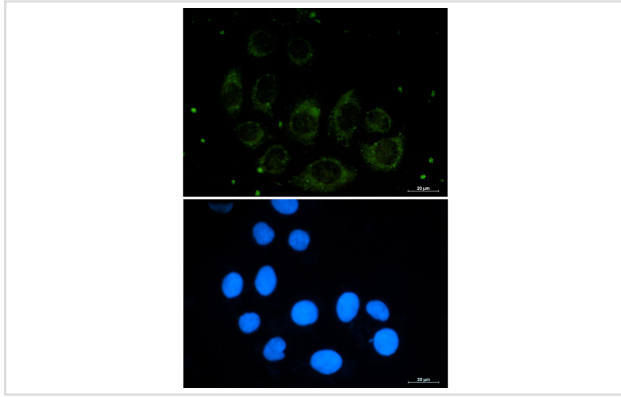
Images



Western blot analysis of Protein CASP in 3T3, Raw264.7 lysates using Protein CASP antibody



Western blot analysis of Protein CASP in HeLa, A549, HL-60, U2OS, C6 lysates using Protein CASP antibody



Immunocytochemistry analysis of Protein CASP (green) in A549 using Protein CASP antibody, and DAPI(blue).

Note: This product is for in vitro research use only