

## RPS8 Rabbit mAb

Catalog No: #57391

Package Size: #57391-1 50ul #57391-2 100ul

Orders: order@signalwayantibody.com

Support: tech@signalwayantibody.com

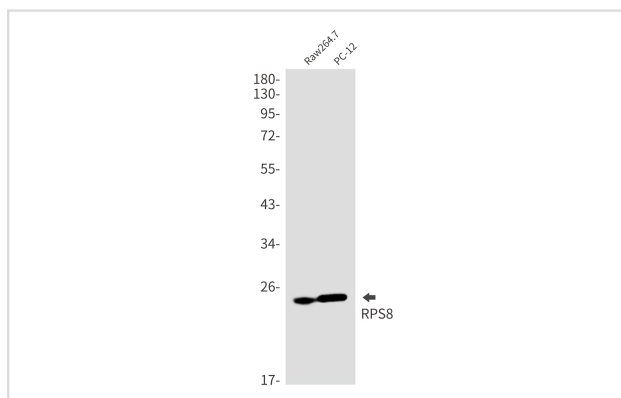
## Description

Product Name	RPS8 Rabbit mAb
Host Species	Rabbit
Clonality	Monoclonal
Isotype	Rabbit IgG
Applications	WB IP ICC
Species Reactivity	Human,Mouse,Rat,Hamster
Immunogen Description	Recombinant protein of human RPS8
Other Names	S8
Accession No.	Swiss-Prot:P62241 Gene ID:6202
Uniprot	P62241
GeneID	6202;
Calculated MW	24 kDa
SDS-PAGE MW	24 kDa
Formulation	50mM Tris-Glycine(pH 7.4), 0.15M NaCl, 40% Glycerol, 0.01% Sodium azide and 0.05% BSA
Storage	Store at 4°C short term. Aliquot and store at -20°C long term. Avoid freeze/thaw cycles.

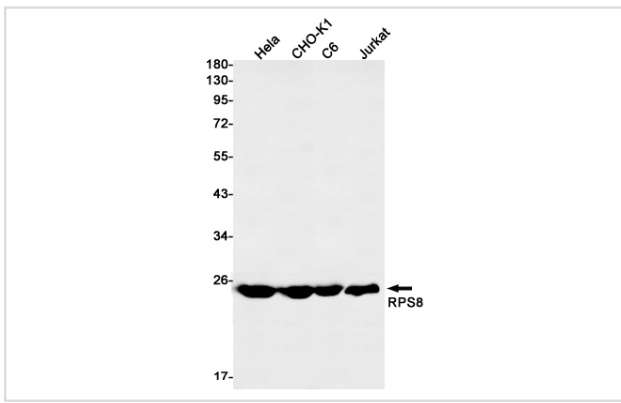
## Application Details

IP: 1/20WB: 1/500-1/1000ICC: 1/50-1/200

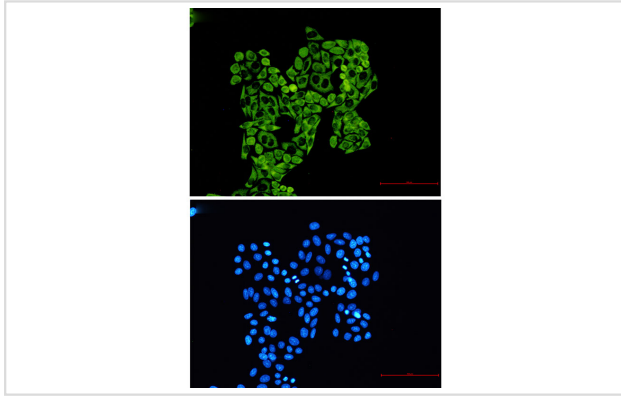
## Images



Western blot analysis of RPS8 in Raw264.7, PC-12 lysates using RPS8 antibody.



Western blot analysis of RPS8 in HeLa, CHO-K1, C6, Jurkat lysates using RPS8 antibody.



Immunocytochemistry analysis of RPS8 (green) in HeLa using RPS8 antibody, and DAPI (blue)

---

Note: This product is for in vitro research use only