

Serine Racemase Rabbit mAb

Catalog No: #57393

Package Size: #57393-1 50ul #57393-2 100ul

Orders: order@signalwayantibody.com

Support: tech@signalwayantibody.com

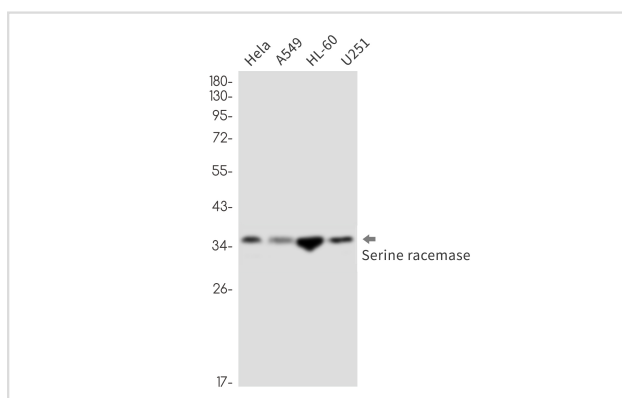
Description

Product Name	Serine Racemase Rabbit mAb
Host Species	Rabbit
Clonality	Monoclonal
Isotype	Rabbit IgG
Applications	WB IP
Species Reactivity	Human
Immunogen Description	A synthetic peptide of human Serine racemase
Other Names	ILV1; ISO1
Accession No.	Swiss-Prot:Q9GZT4 Gene ID:63826
Uniprot	Q9GZT4
GeneID	63826;
Calculated MW	37 kDa
SDS-PAGE MW	37 kDa
Formulation	50mM Tris-Glycine(pH 7.4), 0.15M NaCl, 40% Glycerol, 0.01% Sodium azide and 0.05% BSA
Storage	Store at 4°C short term. Aliquot and store at -20°C long term. Avoid freeze/thaw cycles.

Application Details

IP:1/20WB: 1/500-1/1000

Images



Western blot analysis of Serine racemase in HeLa, A549, HL-60, U251 lysates using Serine Racemase antibody.

Note: This product is for in vitro research use only