

## SMARCA2 Rabbit mAb

Catalog No: #57394

Package Size: #57394-1 50ul #57394-2 100ul

Orders: order@signalwayantibody.com

Support: tech@signalwayantibody.com

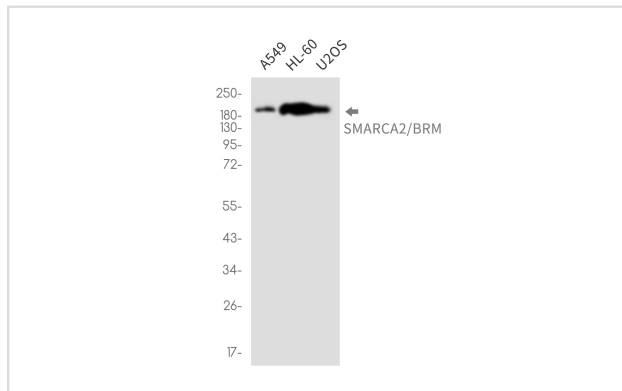
## Description

Product Name	SMARCA2 Rabbit mAb
Host Species	Rabbit
Clonality	Monoclonal
Isotype	Rabbit IgG
Applications	WB IHC ICC
Species Reactivity	Human
Immunogen Description	A synthetic peptide of human SMARCA2/BRM
Other Names	SMARCA2; BAF190B; BRM; SNF2A; SNF2L2; Probable global transcription activator SNF2L2; ATP-dependent helicase SMARCA2; BRG1-associated factor 190B; BAF190B; Protein brahma homolog; hBRM; SNF2-alpha; SWI/SNF-related matrix-associated actin-dependent regulator of chromatin subfamily A member 2
Accession No.	Swiss-Prot:P51531 Gene ID:6595
Uniprot	P51531
GeneID	6595;
Calculated MW	181 kDa
SDS-PAGE MW	190 kDa
Formulation	50mM Tris-Glycine(pH 7.4), 0.15M NaCl, 40% Glycerol, 0.01% Sodium azide and 0.05% BSA
Storage	Store at 4°C short term. Aliquot and store at -20°C long term. Avoid freeze/thaw cycles.

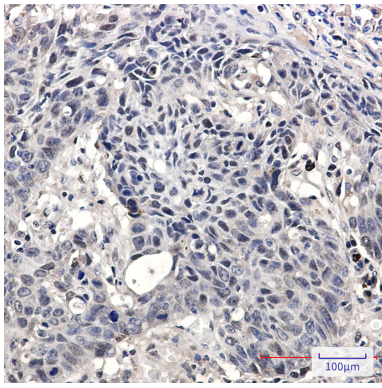
## Application Details

WB: 1/500-1/1000 IHC: 1/50-1/100 ICC: 1/50-1/200

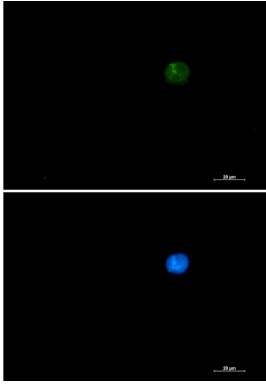
## Images



Western blot analysis of SMARCA2/BRM in A549, HL-60, U2OS lysates using SMARCA2/BRM antibody.



Immunohistochemistry analysis of paraffin-embedded Human lung cancer tissue using SMARCA2/BRM antibody. High-pressure and temperature Sodium Citrate pH 6.0 was used for antigen retrieval.



Immunocytochemistry analysis of SMARCA2 (green) in 293 using SMARCA2 antibody, and DAPI (blue).

---

Note: This product is for in vitro research use only