

SMARCD1 Rabbit mAb

Catalog No: #57395

Package Size: #57395-1 50ul #57395-2 100ul

Orders: order@signalwayantibody.comSupport: tech@signalwayantibody.com

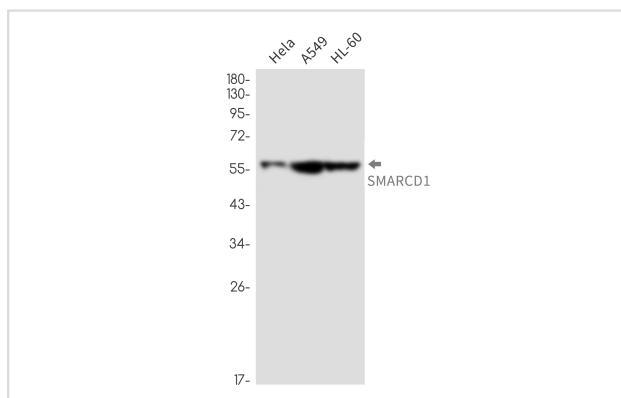
Description

Product Name	SMARCD1 Rabbit mAb
Host Species	Rabbit
Clonality	Monoclonal
Isotype	Rabbit IgG
Applications	WB IP
Species Reactivity	Human
Immunogen Description	A synthetic peptide of human SMARCD1
Other Names	CSS11; Rsc6p; BAF60A; CRACD1
Accession No.	Swiss-Prot:Q96GM5 Gene ID:6602
Uniprot	Q96GM5
GeneID	6602;
Calculated MW	58 kDa
SDS-PAGE MW	58 kDa
Formulation	50mM Tris-Glycine(pH 7.4), 0.15M NaCl, 40% Glycerol, 0.01% Sodium azide and 0.05% BSA
Storage	Store at 4°C short term. Aliquot and store at -20°C long term. Avoid freeze/thaw cycles.

Application Details

IP:1/20WB: 1/500-1/1000

Images



Western blot analysis of SMARCD1 in HeLa, A549, HL-60 lysates using SMARCD1 antibody.

Note: This product is for in vitro research use only