

## SV40 T Antigen Rabbit mAb

Catalog No: #57396

Package Size: #57396-1 50ul #57396-2 100ul

Orders: order@signalwayantibody.com

Support: tech@signalwayantibody.com

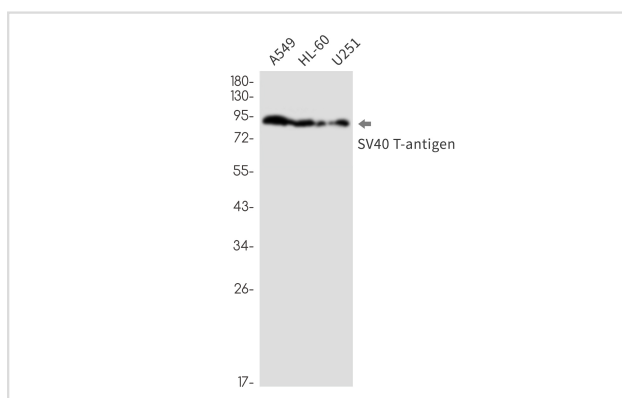
## Description

Product Name	SV40 T Antigen Rabbit mAb
Host Species	Rabbit
Clonality	Monoclonal
Isotype	Rabbit IgG
Applications	WB IP ICC
Species Reactivity	All
Immunogen Description	A synthetic peptide of SV40 T-antigen
Other Names	Large T antigen; LT; LT-AG
Accession No.	Swiss-Prot:P03070 Gene ID:29031019
Uniprot	P03070
GeneID	29031019;
Calculated MW	82 kDa
SDS-PAGE MW	90 kDa
Formulation	50mM Tris-Glycine(pH 7.4), 0.15M NaCl, 40% Glycerol, 0.01% Sodium azide and 0.05% BSA
Storage	Store at 4°C short term. Aliquot and store at -20°C long term. Avoid freeze/thaw cycles.

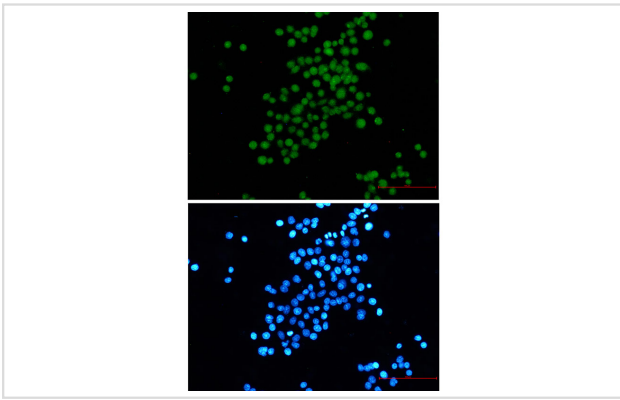
## Application Details

IP:1/20WB: 1/500-1/1000ICC: 1/50-1/200

## Images



Western blot analysis of SV40 T-antigen in A549, HL-60, U251 lysates using SV40 T Antigen antibody.



Immunocytochemistry analysis of SV40 T antigen (green) in HeLa using SV40 T antigen antibody, and DAPI (blue)

---

Note: This product is for in vitro research use only