

Porcine Alpha-2-Macroglobulin (a2M) ELISA Kit

Catalog No: #EK20581



Package Size: #EK20581-1 48T #EK20581-2 96T

Orders: order@signalwayantibody.com
Support: tech@signalwayantibody.com

Description

Product Name	Porcine Alpha-2-Macroglobulin (a2M) ELISA Kit
Brief Description	ELISA Kit
Purification	ELISA
Species Reactivity	Porcine

Application Details

Detect Range: 1.56-100 ng/mL

Sensitivity: 0.57ng/mL

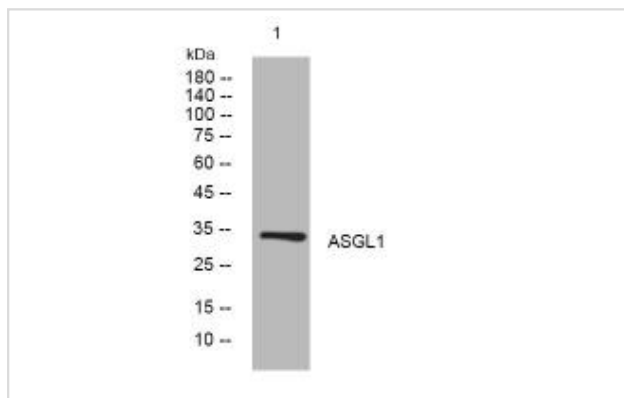
Sample Type: serum, plasma, tissue homogenates, cell lysates, cell culture supernates or other biological fluids.

Sample Volume: 50 μL

Assay Time: 1-4.5h

Detection wavelength: 450 nm

Images



Product Description

Detection Method: sandwich

Note: This product is for in vitro research use only