

Rat Kidney Injury Molecule 1 (Kim1) ELISA Kit

Catalog No: #EK20585

Package Size: #EK20585-1 48T #EK20585-2 96T

Orders: order@signalwayantibody.comSupport: tech@signalwayantibody.com

Description

Product Name	Rat Kidney Injury Molecule 1 (Kim1) ELISA Kit
Brief Description	ELISA Kit
Applications	ELISA
Species Reactivity	Rat

Application Details

Detect Range:62.5-4000pg/mL

Sensitivity:22.6pg/mL

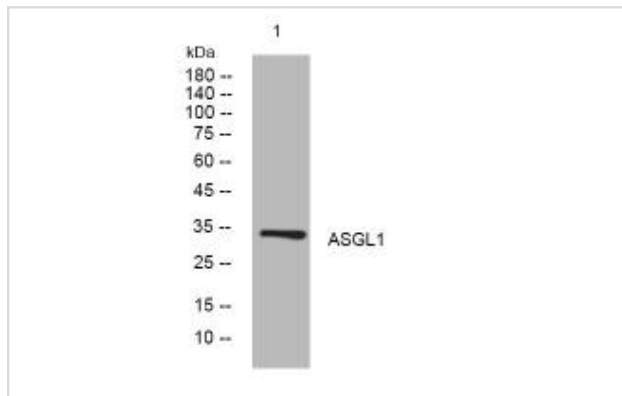
Sample Type:serum, plasma, tissue homogenates, cell lysates, cell culture supernates or other biological fluids.

Sample Volume: 50 &mu;L

Assay Time:1-4.5h

Detection wavelength:450 nm

Images



Product Description

Detection Method:sandwich

Note: This product is for in vitro research use only