

# Recombinant Rat Granulocyte-Macrophage Colony Stimulating Factor

Catalog No: #AP60243

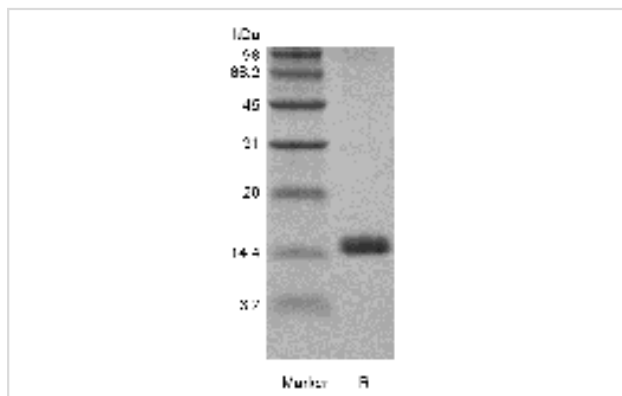
Orders: [order@signalwayantibody.com](mailto:order@signalwayantibody.com)Support: [tech@signalwayantibody.com](mailto:tech@signalwayantibody.com)

Package Size: #AP60243-1 5ug #AP60243-2 100ug #AP60243-3 500ug

## Description

Product Name	Recombinant Rat Granulocyte-Macrophage Colony Stimulating Factor
Host Species	Escherichia coli.
Purification	> 98 % by SDS-PAGE and HPLC analyses.
Other Names	Granulocyte/Macrophage Colony-Stimulating Factor, CSF-2, MGI-1GM, Pluripoietin- $\alpha$
Uniprot	P48750
GeneID	116630
Calculated MW	Approximately 14.5 kDa, a single non-glycosylated polypeptide chain containing 127 amino acids.
Target Sequence	APTRSPNPVT RPWKHVDAIK EALSLNDMR ALENEKNEDV DIISNEFSIQ RPTCVQTRLK LYKQGLRGNL TKLNGALTM I ASHYQTNCP TPETDCEIEV TTFEDFIKNL KGFLFDIPFD CWKPVQK
Formulation	Lyophilized from a 0.2 $\mu$ m filtered solution in PBS, pH 7.4.
Storage	Use a manual defrost freezer and avoid repeated freeze-thaw cycles.- 12 months from date of receipt, -20 to -70 °C as supplied.- 1 month, 2 to 8 °C under sterile conditions after reconstitution.- 3 months, -20 to -70 °C under sterile conditions after reconstitution.

## Images



## Background

Granulocyte-Macrophage Colony Stimulating Factor (GM-CSF) is secreted by a number of different cell types (including activated T cells, B cells, macrophages, mast cells, endothelial cells and fibroblasts) in response to cytokine or immune and inflammatory stimulation. It was initially characterized as a growth factor that can support the in vitro colony formation of granulocyte-macrophage progenitors and has functions of stimulates the growth and differentiation of hematopoietic precursor cells from various lineages. GM-CSF has also been reported to have a functional role on non-hematopoietic cells and can induce human endothelial cells to migrate and proliferate. Additionally, it can stimulate the proliferation of a number of tumor cell lines, including osteogenic sarcoma, carcinoma and adenocarcinoma cell lines. It is reported that GM-CSF has no biological effects across species.

---

Note: This product is for in vitro research use only