

## Recombinant Porcine Interleukin-1 beta

Catalog No: #AP60269

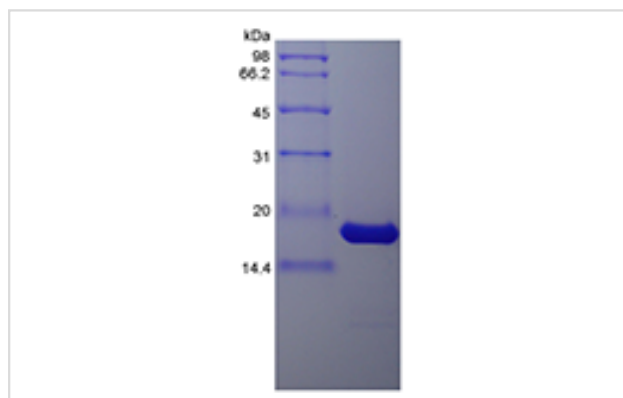
Package Size: #AP60269-1 10ug #AP60269-2 100ug #AP60269-3 500ug

Orders: [order@signalwayantibody.com](mailto:order@signalwayantibody.com)Support: [tech@signalwayantibody.com](mailto:tech@signalwayantibody.com)

## Description

Product Name	Recombinant Porcine Interleukin-1 beta
Host Species	Escherichia coli.
Purification	> 95 % by SDS-PAGE and HPLC analyses.
Other Names	IL-1 beta
Uniprot	P26889
GeneID	397122
Calculated MW	Approximately 17.6 kDa, a single non-glycosylated polypeptide chain containing 153 amino acids.
Target Sequence	ANVQSMECKL QDKDHKSLVL AGPHMLKALH LLTGDLKREV VFCMSFVQGD DSNKIPVTL GIKGKNLYLS CVMKDNTPTL QLEDIDPKRY PKRDMKRFV FYKTEIKNRV EFESALYPNW YISTSQAEQK PVFLGNSKGR QDITDFTMEV LSP
Formulation	Lyophilized from a 0.2 µm filtered concentrated solution in PBS, pH 7.4, 3 % trehalose.
Storage	Use a manual defrost freezer and avoid repeated freeze-thaw cycles.- 12 months from date of receipt, -20 to -70 °C as supplied.- 1 month, 2 to 8 °C under sterile conditions after reconstitution.- 3 months, -20 to -70 °C under sterile conditions after reconstitution.

## Images



## Background

Interleukin-1 beta (IL-1 $\beta$ ) is a non-secreted proinflammatory cytokine produced mainly by activated macrophages, as well as neutrophils, epithelial cells, and endothelial cells. It possesses metabolic, physiological, haematopoietic activities, and plays one of the central roles in the regulation of the immune responses. Both IL-1 $\alpha$  and IL-1 $\beta$  binds to the same receptor and has similar but not identical biological properties. Recombinant porcine interleukin-1 beta is a 17 kDa protein containing 153 amino acid residues and it shares 63 % - 70 % a.a. sequence identity with canine, cotton rat, equine, feline, human, mouse, rat, and rhesus IL1 $\beta$ .

Note: This product is for in vitro research use only