

Recombinant Equine Interleukin-1 beta

Catalog No: #AP60273

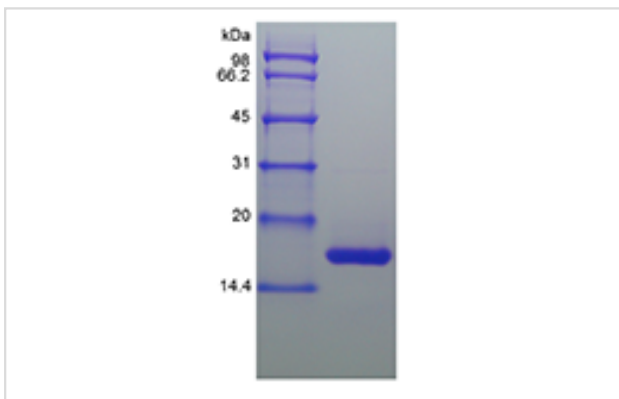
Package Size: #AP60273-1 10ug #AP60273-2 100ug #AP60273-3 500ug

Orders: order@signalwayantibody.comSupport: tech@signalwayantibody.com

Description

Product Name	Recombinant Equine Interleukin-1 beta
Host Species	Escherichia coli.
Purification	> 95 % by SDS-PAGE and HPLC analyses.
Other Names	IL-1 beta
Uniprot	Q28386
GeneID	100034237
Calculated MW	Approximately 17.3 kDa, a single non-glycosylated polypeptide chain containing 153 amino acids.
Target Sequence	AAMHSVNCRL RDIYHKSLVL SGACELQAVH LNGENTNQV VFCMSFVQGE EETDKIPVAL GLKEKNLYLS CGMKDGGKPTL QLETVPNTY PKRKMEKRFV FNKMEIKGNV EFESAMYPNW YISTSQAEKS PVFLGNTRGG RDITDFIMEI TSA
Formulation	Lyophilized from a 0.2 µm filtered concentrated solution in 1 x PBS, pH 7.4, 0.1 % Tween-80.
Storage	Use a manual defrost freezer and avoid repeated freeze-thaw cycles.- 12 months from date of receipt, -20 to -70 °C as supplied.- 1 month, 2 to 8 °C under sterile conditions after reconstitution.- 3 months, -20 to -70 °C under sterile conditions after reconstitution.

Images



Background

Interleukin-1 beta (IL-1 β) is a non-secreted proinflammatory cytokine produced mainly by activated macrophages, as well as neutrophils, epithelial cells, and endothelial cells. It possesses metabolic, physiological, haematopoietic activities, and plays one of the central roles in the regulation of the immune responses. Both IL-1 α and IL-1 β binds to the same receptor and has similar but not identical biological properties. Recombinant equine interleukin-1 beta is a 17 kDa protein containing 153 amino acid residues and it shares 63 %–70 % a.a. sequence identity with canine, cotton rat, porcine, feline, human, mouse, rat, and rhesus IL1 β .

Note: This product is for in vitro research use only