

# Recombinant Human Macrophage Inflammatory Protein-3 alpha/CCL20

Catalog No: #AP60313

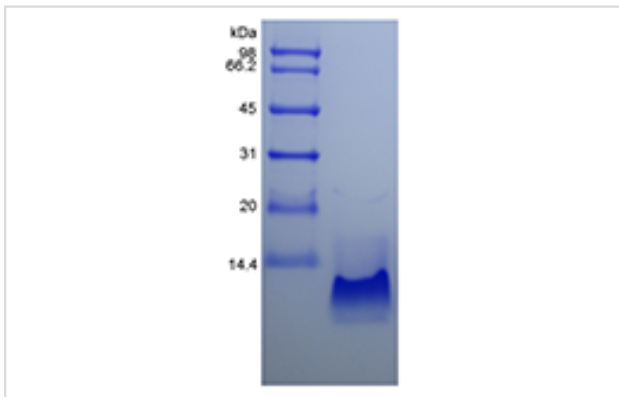
Orders: [order@signalwayantibody.com](mailto:order@signalwayantibody.com)Support: [tech@signalwayantibody.com](mailto:tech@signalwayantibody.com)

Package Size: #AP60313-1 5ug #AP60313-2 100ug #AP60313-3 500ug

## Description

Product Name	Recombinant Human Macrophage Inflammatory Protein-3 alpha/CCL20
Host Species	Escherichia coli.
Purification	> 97 % by SDS-PAGE and HPLC analyses.
Other Names	LARC, Beta-chemokine Exodus-1, Liver and Activation-regulated Chemokine
Uniprot	P78556
GeneID	6364
Calculated MW	Approximately 8.0 kDa, a single non-glycosylated polypeptide chain containing 70 amino acids.
Target Sequence	ASNFDCCCLGY TDRILHPKFI VGFTRQLANE GCDINAIIFH TKKKLSVCAN PKQTVWKYIV RLLSKVKNM
Formulation	Lyophilized from a 0.2 µm filtered concentrated solution in 20 mM PB, pH 7.4, 100 mM NaCl.
Storage	Use a manual defrost freezer and avoid repeated freeze-thaw cycles.- 12 months from date of receipt, -20 to -70 °C as supplied.- 1 month, 2 to 8 °C under sterile conditions after reconstitution.- 3 months, -20 to -70 °C under sterile conditions after reconstitution.

## Images



## Background

CCL20, also named LARC (Liver and Activation-regulated Chemokine), is encoded by CCL20 located on chromosome 2 in humans. The expression can be induced by LPS and some inflammatory cytokines, and it is at a high level in lymph nodes, PBL, fatal liver, fatal lung, appendix and so on. CCL20 has functions of chemotactic towards lymphocytes and dendritic cells. Additionally, it promotes the adhesion of memory CD4+ T cells and inhibits colony formation of bone marrow myeloid immature progenitors. CCL20 elicits its effects by binding with CCR6 receptor.

Note: This product is for in vitro research use only