

## Recombinant Human Exodus-2/CCL21

Catalog No: #AP60314

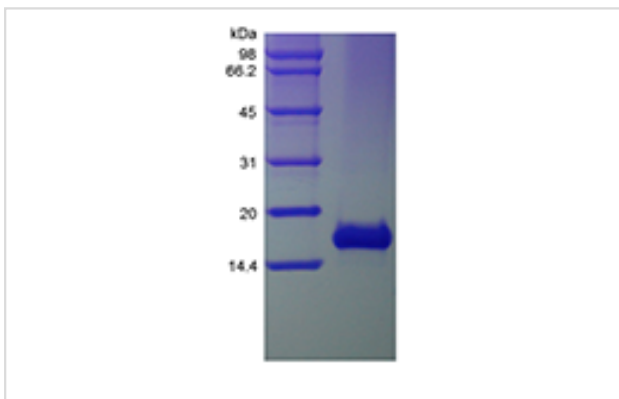
Package Size: #AP60314-1 5ug #AP60314-2 100ug #AP60314-3 500ug

Orders: [order@signalwayantibody.com](mailto:order@signalwayantibody.com)Support: [tech@signalwayantibody.com](mailto:tech@signalwayantibody.com)

## Description

|                 |  |
|-----------------|--|
| Product Name    | Recombinant Human Exodus-2/CCL21   |
| Host Species    | Escherichia coli.  |
| Purification    | > 95 % by SDS-PAGE analyses.   |
| Other Names     | 6Ckine, Beta-chemokine Exodus-2, SLC   |
| Uniprot         | O00585   |
| GeneID          | 6366   |
| Calculated MW   | Approximately 12.2 kDa, a single, non-glycosylated polypeptide chain containing 111 amino acids.   |
| Target Sequence | SDGGAQDCCL KYSQRKIPAK VVRSYRKQEP SLGCSIPAIL FLPRKRSQAE LCADPKELWV QQLMQHLDKT<br>PSPQKPAQGC RKDRGASKTG KKGKGSKGCK RTERSQTPKG P  |
| Formulation     | Lyophilized from a 0.2 µm filtered concentrated solution in 2 x PBS, pH 7.0.   |
| Storage         | Use a manual defrost freezer and avoid repeated freeze-thaw cycles.<br>- 12 months from date of receipt, -20 to -70 °C as supplied.<br>- 1 month, 2 to 8 °C under sterile conditions after reconstitution.<br>- 3 months, -20 to -70 °C under sterile conditions after reconstitution. |

## Images



## Background

CCL21 is encoded by CCL21 gene that is located in Chr. 9 and shows 21-33 % identity to other CC chemokines. This chemokine contains the four conserved cysteines characteristic of  $\beta$  chemokines plus two additional cysteines in its unusually long carboxylterminal domain. CCL21 is highly expressed in lymph nodes of certain endothelial cells, and in the spleen and appendix. It elicits effects by binding with CCR7, having functions of T and B lymphocytes chemotaxis and inhibiting hematopoiesis.

Note: This product is for in vitro research use only