

Recombinant Human Thymus Expressed Chemokine/CCL25

Catalog No: #AP60318

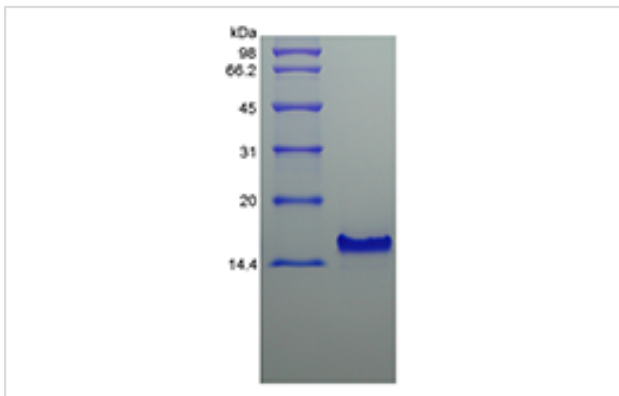
Orders: order@signalwayantibody.comSupport: tech@signalwayantibody.com

Package Size: #AP60318-1 5ug #AP60318-2 100ug #AP60318-3 500ug

Description

Product Name	Recombinant Human Thymus Expressed Chemokine/CCL25
Host Species	Escherichia coli.
Purification	> 97 % by SDS-PAGE and HPLC analyses.
Other Names	TECK, CCL25, SCYA25, Ckb15
Uniprot	O15444
GeneID	6370
Calculated MW	Approximately 14.3 kDa, a single, non-glycosylated polypeptide chain containing 128 amino acids.
Target Sequence	MQGVFEDCCL AYHYPIGWAV LRRAWTYRIQ EVSGSCNLPA AIFYLPKRHR KVCGNPKSRE VQRAMKLLDA RNKVFALHH NTQTFQAGPH AVKKLSSGNS KLSSSKFSNP ISSSKRNVSL LISANSGL
Formulation	Lyophilized from a 0.2 µm filtered concentrated solution in 20 mM PB, pH 7.4, 150 mM NaCl.
Storage	Use a manual defrost freezer and avoid repeated freeze-thaw cycles.- 12 months from date of receipt, -20 to -70 °C as supplied.- 1 month, 2 to 8 °C under sterile conditions after reconstitution.- 3 months, -20 to -70 °C under sterile conditions after reconstitution.

Images



Background

CCL25 is new member of CC family chemokine. It is also called Thymus-expressed chemokine (TECK) because it is restricted produced by thymus and intestine. Especially, the dendritic cells derived from thymus but not bone marrow had identified to be the source of CCL25. By binding with CCR9, it elicits its effects of chemotactic for thymocytes, macrophages, and dendritic cells. Additionally, CCL25 takes part in regulating the development of T-cells.

Note: This product is for in vitro research use only