

Recombinant Human Mucosae-associated Epithelial Chemokine/CCL28

Catalog No: #AP60321

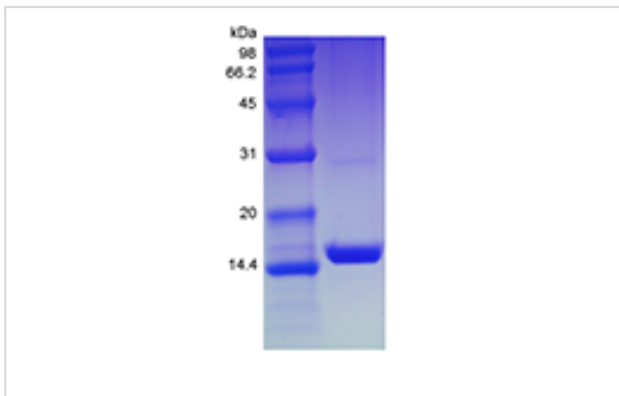
Orders: order@signalwayantibody.comSupport: tech@signalwayantibody.com

Package Size: #AP60321-1 5ug #AP60321-2 100ug #AP60321-3 500ug

Description

Product Name	Recombinant Human Mucosae-associated Epithelial Chemokine/CCL28
Host Species	Escherichia coli.
Purification	> 97 % by SDS-PAGE and HPLC analyses.
Other Names	CCK1
Uniprot	Q9NRJ3
GeneID	56477
Calculated MW	Approximately 12.4 kDa, a single non-glycosylated polypeptide chain containing 108 amino acids.
Target Sequence	SEAILPIASS CCTEVSHHIS RLLERVNMC RIQRADGDCD LAAVILHVKR RRICVSPHNH TVKQWMKVQA AKKNGKGNVC HRKKHHGKRN SNRAHQGKHE TYGHKTPY
Formulation	Lyophilized from a 0.2 µm filtered concentrated solution in 20 mM PB, pH 7.4, 130 mM NaCl.
Storage	Use a manual defrost freezer and avoid repeated freeze-thaw cycles.- 12 months from date of receipt, -20 to -70 °C as supplied.- 1 month, 2 to 8 °C under sterile conditions after reconstitution.- 3 months, -20 to -70 °C under sterile conditions after reconstitution.

Images



Background

CCL28 belongs to CC family chemokine, also named mucosae-associated epithelial chemokine (MEC). The CCL28 cDNA is located on Chr.5 in humans, and the mRNA of CCL28 is highly expressed by epithelial cells of diverse tissues including normal and pathological colon, salivary gland, mammary gland, trachea and rectum. The amino acids sequence of human and mouse CCL28 shares 83 % identity, when the protein is processed to be the mature form. CCL28 is signaling through CCR3 and CCR10, and chemotactic for resting CD4, CD8 T-cells and eosinophils.

Note: This product is for in vitro research use only