

Recombinant Rhesus Macaque gamma-Interferon Inducible Protein 10/CXCL10

Catalog No: #AP60323

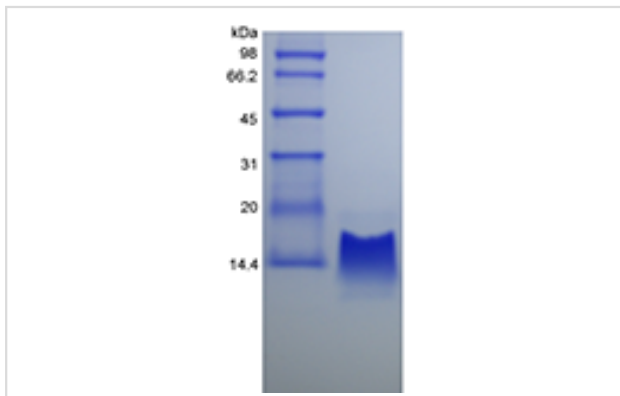
Orders: order@signalwayantibody.comSupport: tech@signalwayantibody.com

Package Size: #AP60323-1 5ug #AP60323-2 100ug #AP60323-3 500ug

Description

Product Name	Recombinant Rhesus Macaque gamma-Interferon Inducible Protein 10/CXCL10
Host Species	Escherichia coli.
Purification	> 97 % by SDS-PAGE and HPLC analyses.
Other Names	Gamma-IP10, Small-inducible Cytokine B10
Uniprot	Q8MIZ1
GeneID	574243
Calculated MW	Approximately 8.7 kDa, a single non-glycosylated polypeptide chain containing 77 amino acids.
Target Sequence	IPLSRTVRCT CISISNQPVN PRSLEKLEII PPSQFCPHVE IIATMKKKGE KRCLNPESKA IKNLLKAVSK ERSKRSP
Formulation	Lyophilized from a 0.2 µm filtered concentrated solution in PBS, pH 7.4.
Storage	Use a manual defrost freezer and avoid repeated freeze-thaw cycles.- 12 months from date of receipt, -20 to -70 °C as supplied.- 1 month, 2 to 8 °C under sterile conditions after reconstitution.- 3 months, -20 to -70 °C under sterile conditions after reconstitution.

Images



Background

CXCL10 also known as IP-10 is belonging to the CXC chemokine family. It is encoded by the CXCL10 gene. CXCL10 was originally identified in monocytes, endothelial cells and fibroblasts as a responder to IFN- γ . This chemokine elicits its effects by binding to the cell surface chemokine receptor CXCR3. CXCL10 has been shown to be a chemoattractant for activated T-lymphocytes and monocytes/macrophages. It also has other roles, such as promotion of T cell adhesion to endothelial cells, and inhibition of bone marrow colony formation and angiogenesis. The rhesus macaque IP-10 shares 69 %, 95 %, 74 % a.a. sequence identity with human, murine, rat IP-10.

Note: This product is for in vitro research use only