

# Recombinant Murine Macrophage-Derived Chemokine/CCL22

Catalog No: #AP60358

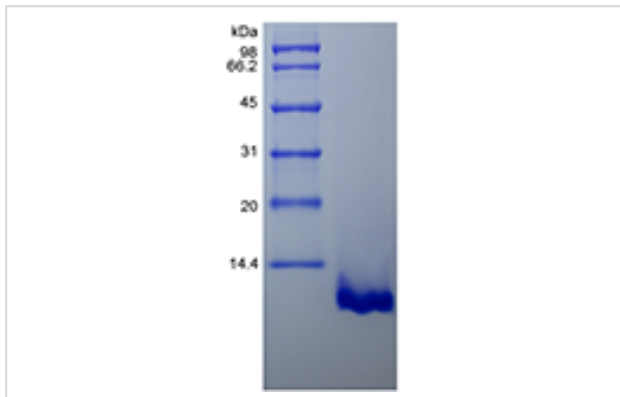
Orders: [order@signalwayantibody.com](mailto:order@signalwayantibody.com)Support: [tech@signalwayantibody.com](mailto:tech@signalwayantibody.com)

Package Size: #AP60358-1 5ug #AP60358-2 100ug #AP60358-3 500ug

## Description

Product Name	Recombinant Murine Macrophage-Derived Chemokine/CCL22
Purification	> 97% by SDS-PAGE analyses.
Other Names	STCP-1, MDC (1-69), Macrophage-derived Chemokine
Uniprot	O88430
GeneID	20299
Calculated MW	Approximately 7.8 kDa, a single, non-glycosylated polypeptide chain containing 68 amino acids.
Target Sequence	GPYGANVEDS ICCQDYIRHP LPSRLVKEFF WTSKSCRKPG VVLITVKNRD ICADPRQVWV KLLHKLS
Formulation	Lyophilized from a 0.2 µm filtered concentrated solution in 2xPBS, 5% Trehalose, 0.02% Tween-20, pH 7.0.
Storage	Use a manual defrost freezer and avoid repeated freeze-thaw cycles. □ A minimum of 12 months from date of receipt, when stored at β -20 °C as supplied. □ 1 month, 2 to 8 °C under sterile conditions after reconstitution. □ 3 months, -20 to -70 °C under sterile conditions after reconstitution.

## Images



## Background

CCL22 is a protein that in mouse is encoded by the CCL22 gene, which locates on the Chr. 8. It is highly expressed in macrophage, monocyte-derived dendritic cell and thymus, additionally, also detected in the tissues of thymus, lymph node and appendix. CCL22 can bind to CCR4, and is a chemoattractant for monocytes, monocyte-derived dendritic cells, and natural killer cells, but not for neutrophils, eosinophils, and resting T-lymphocytes. After secreted from monocyte-derived dendritic cells, the protein can be proteolytic cleaved into three forms: MDC (3-69), MDC (5-69), MDC (7-69).

Note: This product is for in vitro research use only