

# Recombinant Rat gamma-Interferon Inducible Protein 10/CXCL10

Catalog No: #AP60370

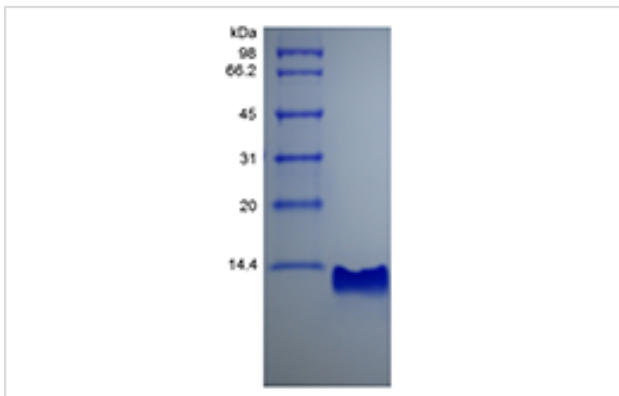
Orders: [order@signalwayantibody.com](mailto:order@signalwayantibody.com)Support: [tech@signalwayantibody.com](mailto:tech@signalwayantibody.com)

Package Size: #AP60370-1 5ug #AP60370-2 100ug #AP60370-3 500ug

## Description

Product Name	Recombinant Rat gamma-Interferon Inducible Protein 10/CXCL10
Host Species	Escherichia coli.
Purification	> 95 % by SDS-PAGE and HPLC analyses.
Other Names	Gamma-IP10, Small-inducible Cytokine B10, Protein Mob-1
Uniprot	P48973
GeneID	245920
Calculated MW	Approximately 8.7 kDa, a single non-glycosylated polypeptide chain containing 77 amino acids.
Target Sequence	IPLARTVRCT CIDFHEQPLR PRAIGKLEII PASLSCPHVE IATMKKNNE KRCLNPESEA IKSLLKAVSQ RRSKRAP
Formulation	Lyophilized from a 0.2 µm filtered concentrated solution in PBS, pH 7.4.
Storage	Use a manual defrost freezer and avoid repeated freeze-thaw cycles.- 12 months from date of receipt, -20 to -70 °C as supplied.- 1 month, 2 to 8 °C under sterile conditions after reconstitution.- 3 months, -20 to -70 °C under sterile conditions after reconstitution.

## Images



## Background

CXCL10 also known as IP-10 is belonging to the CXC chemokine family. It is encoded by the CXCL10 gene, and in rat it is also named the Mob-1 gene. This gene was identified on the basis of differential expression in rat embryo fibroblasts. CXCL10 elicits its effects by binding to the cell surface chemokine receptor CXCR3. CXCL10 has been shown to be a chemoattractant for activated T-lymphocytes and monocytes/macrophages. It also has other roles, such as promotion of T cell adhesion to endothelial cells, and inhibition of bone marrow colony formation and angiogenesis. Rat CXCL10 shares approximately 68 % amino acid sequence identity with human CXCL10.

---

Note: This product is for in vitro research use only