

Recombinant Rat Mucosae-associated Epithelial Chemokine/CCL28

Catalog No: #AP60384

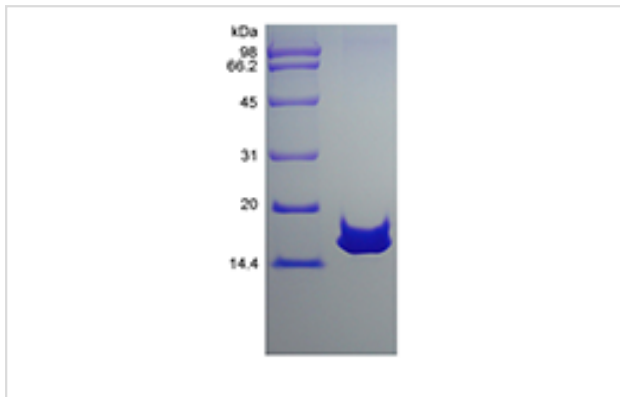
Orders: order@signalwayantibody.comSupport: tech@signalwayantibody.com

Package Size: #AP60384-1 5ug #AP60384-2 100ug #AP60384-3 500ug

Description

Product Name	Recombinant Rat Mucosae-associated Epithelial Chemokine/CCL28
Host Species	Escherichia coli.
Purification	> 96 % by SDS-PAGE and HPLC analyses.
Other Names	CCK1
Calculated MW	Approximately 13.1 kDa, a single non-glycosylated polypeptide chain containing 116 amino acids.
Target Sequence	SEAILPIASS CTEVSHHIP RLLERVNSC SIQRADGDCD LAAVILHVKR RRICVSPHNP TLKRWMSASE MKNGKENLCP RKKQDSGKDR KGHTPRKHGK HGTRRIHGTH DHEAPR
Formulation	Lyophilized from a 0.2 µm filtered concentrated solution in 20 mM PB, pH 7.4, 200 mM NaCl.
Storage	Use a manual defrost freezer and avoid repeated freeze-thaw cycles.- 12 months from date of receipt, -20 to -70 °C as supplied.- 1 month, 2 to 8 °C under sterile conditions after reconstitution.- 3 months, -20 to -70 °C under sterile conditions after reconstitution.

Images



Background

CCL28 belongs to CC family chemokine, also named mucosae-associated epithelial chemokine (MEC). The CCL28 mRNA is highly expressed by epithelial cells of diverse tissues including normal and pathological colon, salivary gland, mammary gland, trachea and rectum. The protein signals through CCR3 and CCR10, and chemotactic for resting CD4, CD8 T-cells and eosinophils. CCL28 shares the most homology with CCL27/CTACK.

Note: This product is for in vitro research use only