

Recombinant Human Bcl-w

Catalog No: #AP60469

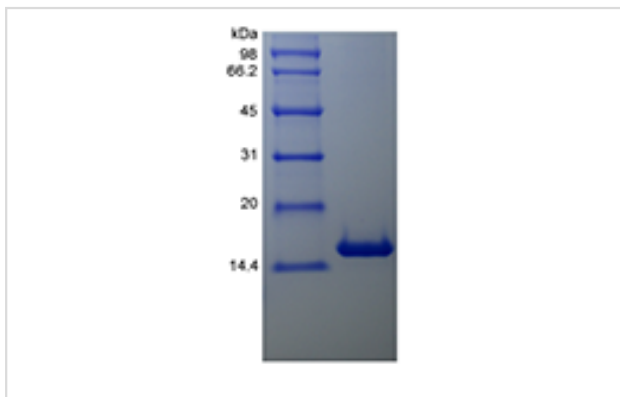
Package Size: #AP60469-1 5ug #AP60469-2 100ug #AP60469-3 500ug

Orders: order@signalwayantibody.comSupport: tech@signalwayantibody.com

Description

Product Name	Recombinant Human Bcl-w
Host Species	Escherichia coli.
Purification	> 95 % by SDS-PAGE and HPLC analyses.
Uniprot	Q92843
GeneID	599
Calculated MW	Approximately 18.6 kDa, a single non-glycosylated polypeptide chain containing 171 amino acids.
Target Sequence	ATPASAPDTR ALVADFGYK LRQKGYVCGA GPGEGPAADP LHQAMRAAGD EFETRFRRTF SDLAAQLHVT PGSAQQRFTQ VSDELFGGGP NWGRLVAFFV FGAALCAESV NKEMEPLVGQ VQEWVMVAYLE TQLADWIHSS GGWAEFTALY GDGALEEARR LREGNWASVR T
Formulation	0.2 µm filtered concentrated solution in 25 mM Hepes, pH 7.4, 100 mM KCl, 10 % Glycerol, 5 % Trehalose, 0.02 % Tween-80.
Storage	Use a manual defrost freezer and avoid repeated freeze-thaw cycles.- 6 months from date of receipt, -20 to -70 °C as supplied.- 3 months, -20 to -70 °C under sterile conditions after opening.

Images



Note: This product is for in vitro research use only