

# Nkx-3.1 Polyclonal Antibody

Catalog No: #48853



Package Size: #48853-1 50ul #48853-2 100ul

Orders: [order@signalwayantibody.com](mailto:order@signalwayantibody.com)  
Support: [tech@signalwayantibody.com](mailto:tech@signalwayantibody.com)

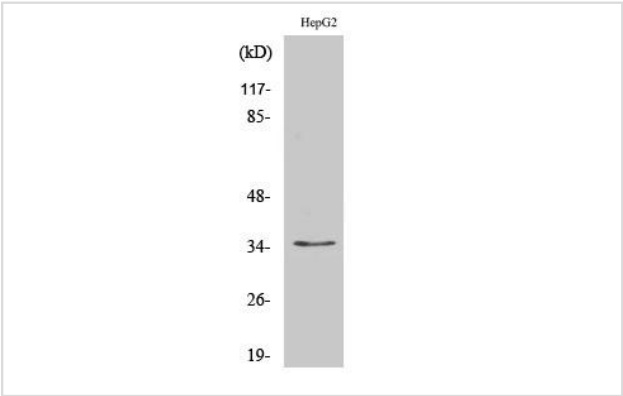
## Description

Product Name	Nkx-3.1 Polyclonal Antibody
Host Species	Rabbit
Clonality	Polyclonal
Isotype	IgG
Purification	The antibody was affinity-purified from rabbit antiserum by affinity-chromatography using epitope-specific immunogen.
Applications	WB;IHC;IF;ELISA
Species Reactivity	Human;Rat;Mouse
Specificity	Nkx-3.1 Polyclonal Antibody detects endogenous levels of Nkx-3.1 protein.
Immunogen Description	The antiserum was produced against synthesized peptide derived from human NKX3-1.
Target Name	NKX3-1
Other Names	NKX3-1; NKX3.1; NKX3A; Homeobox protein Nkx-3.1; Homeobox protein NK-3 homolog A
Uniprot	Q99801
GeneID	4824
Calculated MW	38kD
Concentration	1 mg/ml
Formulation	Liquid in PBS containing 50% glycerol, 0.5% BSA and 0.02% sodium azide.
Storage	Store at -20°C/1 year

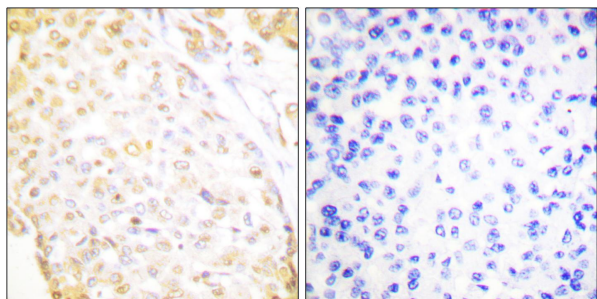
## Application Details

WB 1:500 - 1:2000. IHC 1:100 - 1:300. ELISA: 1:20000.. IF 1:50-200

## Images



Western Blot analysis of various cells using Nkx-3.1 Polyclonal Antibody



Immunohistochemistry analysis of paraffin-embedded human breast carcinoma, using NKX3.1 Antibody. The picture on the right is blocked with the synthesized peptide

---

Note: This product is for in vitro research use only