

Actin Rabbit mAb

Catalog No: #58497

Package Size: #58497-1 50ul #58497-2 100ul

Orders: order@signalwayantibody.com

Support: tech@signalwayantibody.com

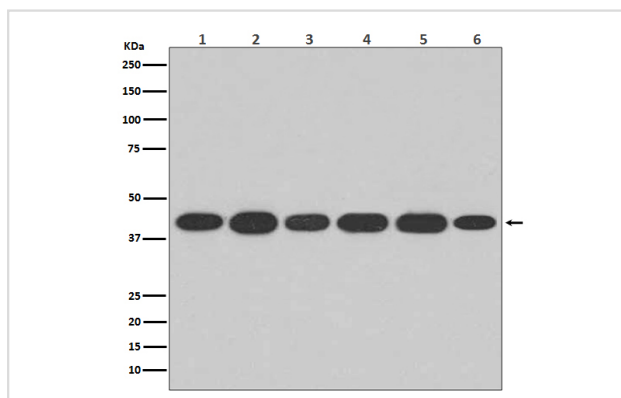
Description

Product Name	Actin Rabbit mAb
Host Species	Rabbit
Clonality	Monoclonal
Isotype	Rabbit IgG
Purification	Affinity-chromatography
Applications	WB IHC ICC/IF IP FC
Species Reactivity	Human Mouse Rat Chicken
Specificity	Actin Antibody detects endogenous levels of total actin protein.
Immunogen Description	A synthesized peptide derived from human Actin
Other Names	a actin; ACTA; ACTA1; Actin alpha skeletal muscle; Actin; actina; actine; aktin; Alpha Actin 1; Alpha skeletal muscle Actin; ASMA; CFTD; CFTD1; CFTDM; MPFD; NEM1; NEM2; NEM3; nemaline myopathy type 3;
Accession No.	Uniprot:P68133
Uniprot	P68133
Formulation	Rabbit IgG in phosphate buffered saline , pH 7.4, 150mM NaCl, 0.02% sodium azide and 50% glycerol.
Storage	Store at +4°C short term. Store at -20°C long term. Avoid freeze / thaw cycle.

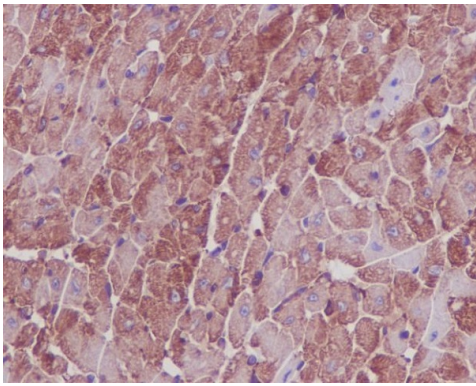
Application Details

WB 1:3000~1:20000 IHC 1:50~1:200 ICC/IF 1:50~1:200 IP 1:50 FC 1:50

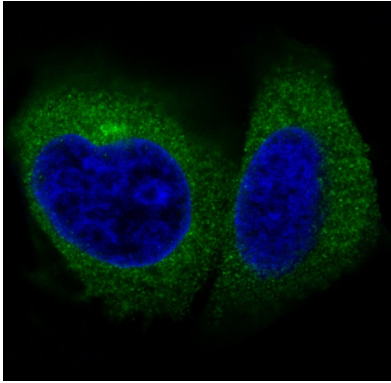
Images



Western blot analysis of Actin expression in (1) Hela cell lysate; (2) Human fetal kidney lysate; (3) 3T3 cell lysate; (4) Mouse spleen lysate; (5) PC-12 cell lysate; (6) Rat heart lysate.



Immunohistochemical analysis of paraffin-embedded mouse heart, using Actin Antibody.



Immunofluorescent analysis of Hela cells, using Actin Antibody.

Product Description

Actins are highly conserved proteins that are involved in various types of cell motility and are ubiquitously expressed in all eukaryotic cells.

Background

Actins are highly conserved proteins that are involved in various types of cell motility and are ubiquitously expressed in all eukaryotic cells.

Note: This product is for in vitro research use only