

beta III Tubulin Rabbit mAb

Catalog No: #58500

Package Size: #58500-1 50ul #58500-2 100ul

Orders: order@signalwayantibody.com

Support: tech@signalwayantibody.com

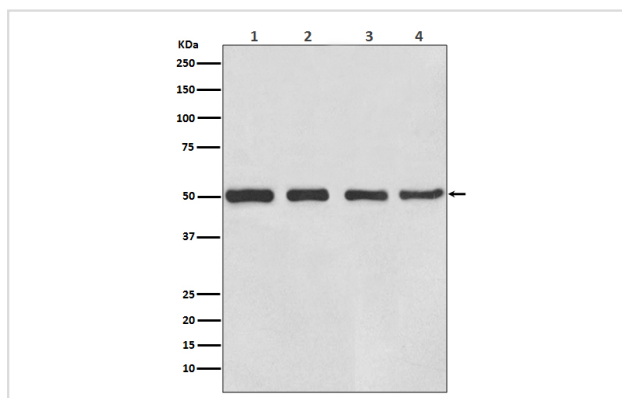
Description

Product Name	beta III Tubulin Rabbit mAb
Host Species	Rabbit
Clonality	Monoclonal
Isotype	Rabbit IgG
Purification	Affinity-chromatography
Applications	WB IHC ICC/IF IP FC
Species Reactivity	Human Mouse Rat
Specificity	beta III Tubulin Antibody detects endogenous levels of total beta Tubulin III
Immunogen Description	A synthesized peptide derived from human beta III Tubulin
Other Names	beta-4; tubulin beta-4; Tubulin beta-4 chain; Tubulin beta-III; CFEOM3A; MC1R; TBB3; TUBB3; TUBB4; Tubulin beta-3 chain; tubulin, beta 3; tubulin, beta, 4,beta tubulin
Accession No.	Uniprot:Q13509
Uniprot	Q13509
Formulation	Rabbit IgG in phosphate buffered saline , pH 7.4, 150mM NaCl, 0.02% sodium azide and 50% glycerol.
Storage	Store at +4°C short term. Store at -20°C long term. Avoid freeze / thaw cycle.

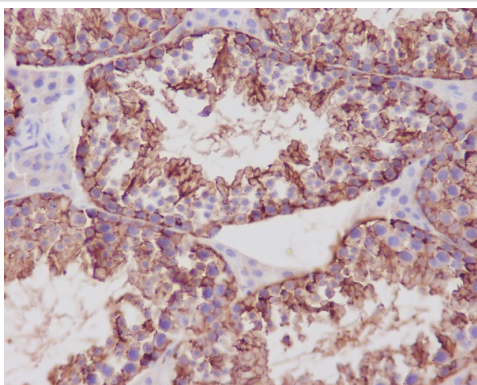
Application Details

WB 1:5000~1:10000 IHC 1:50~1:200 ICC 1:50~1:200 IP 1:100 FC 1:50

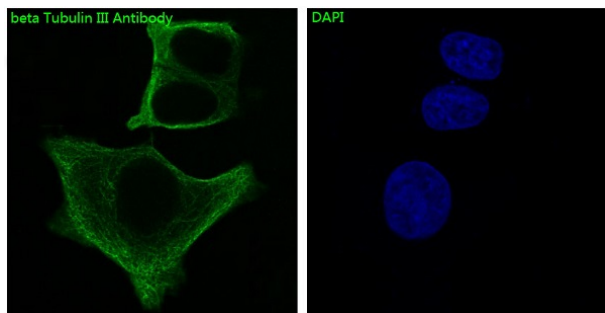
Images



Western blot analysis of beta III Tubulin expression in (1) HeLa cell lysate; (2) PC-12 cell lysate; (3) Mouse brain lysate; (4) Rat brain lysates with beta Tubulin III Antibody.



Immunohistochemical analysis of paraffin-embedded mouse testis, using beta III Tubulin Antibody.



Immunofluorescent analysis of MCF7 cells, using beta III Tubulin Antibody .

Product Description

TUBB3 Tubulin is the major constituent of microtubules. It binds two moles of GTP, one at an exchangeable site on the beta chain and one at a non-exchangeable site on the alpha-chain. TUBB3 plays a critical role in proper axon guidance and maintenance.

Background

TUBB3 Tubulin is the major constituent of microtubules. It binds two moles of GTP, one at an exchangeable site on the beta chain and one at a non-exchangeable site on the alpha-chain. TUBB3 plays a critical role in proper axon guidance and maintenance.

Note: This product is for in vitro research use only