

## beta Tubulin Rabbit mAb

Catalog No: #58501

Package Size: #58501-1 50ul #58501-2 100ul

Orders: order@signalwayantibody.com

Support: tech@signalwayantibody.com

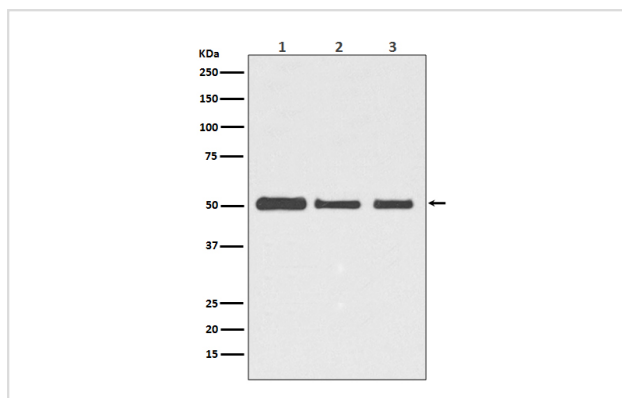
## Description

Product Name	beta Tubulin Rabbit mAb
Host Species	Rabbit
Clonality	Monoclonal
Isotype	Rabbit IgG
Purification	Affinity-chromatography
Applications	WB IHC IP
Species Reactivity	Human Mouse Rat
Specificity	beta Tubulin Antibody detects endogenous levels of total beta Tubulin
Immunogen Description	A synthesized peptide derived from human beta Tubulin
Other Names	Beta 4 tubulin; Beta 5 tubulin; Beta1 tubulin; Tubulin beta chain; Tubulin beta class I;
Accession No.	Uniprot:P07437
Uniprot	P07437
Formulation	Rabbit IgG in phosphate buffered saline , pH 7.4, 150mM NaCl, 0.02% sodium azide and 50% glycerol.
Storage	Store at +4°C short term. Store at -20°C long term. Avoid freeze / thaw cycle.

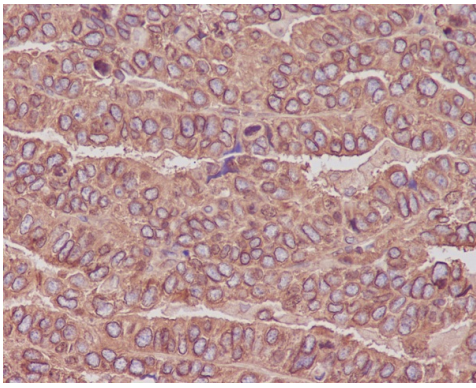
## Application Details

WB 1:3000~1:10000 IHC 1:50~1:200 IP 1:50

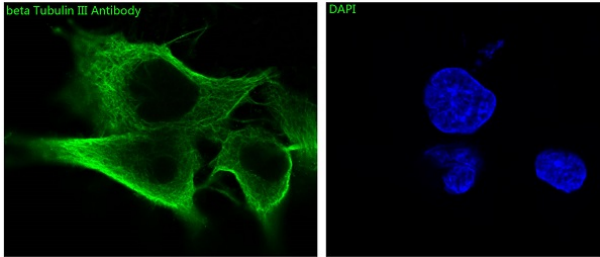
## Images



Western blot analysis of beta Tubulin expression in (1) HeLa cell lysate; (2) NIH/3T3 cell lysate; (3) C6 cell lysate.



Immunohistochemical analysis of paraffin-embedded human ovarian cancer, using beta Tubulin Antibody.



Immunofluorescent analysis of PC12 cells, using beta Tubulin Antibody .

## Product Description

Tubulin is the major constituent of microtubules. It binds two moles of GTP, one at an exchangeable site on the beta chain and one at a non-exchangeable site on the alpha-chain.

## Background

Tubulin is the major constituent of microtubules. It binds two moles of GTP, one at an exchangeable site on the beta chain and one at a non-exchangeable site on the alpha-chain.

Note: This product is for in vitro research use only