

## alpha Tubulin Rabbit mAb

Catalog No: #58503

Package Size: #58503-1 50ul #58503-2 100ul

Orders: order@signalwayantibody.com

Support: tech@signalwayantibody.com

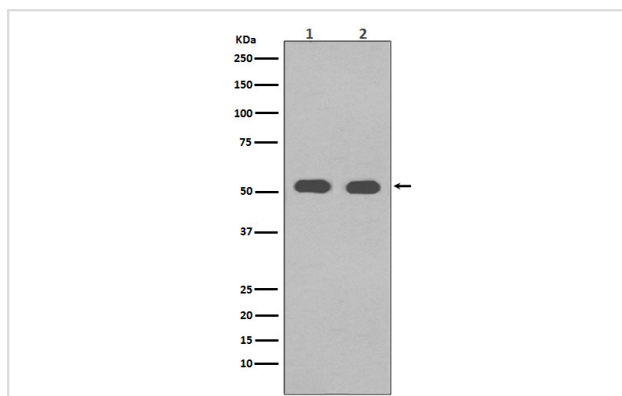
## Description

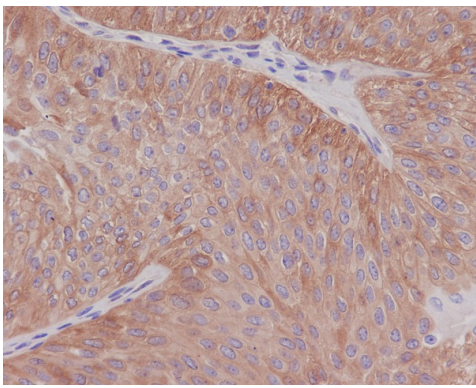
|                       |                                                                                                    |
|-----------------------|----------------------------------------------------------------------------------------------------|
| Product Name          | alpha Tubulin Rabbit mAb                                                                           |
| Host Species          | Rabbit                                                                                             |
| Clonality             | Monoclonal                                                                                         |
| Isotype               | Rabbit IgG                                                                                         |
| Purification          | Affinity-chromatography                                                                            |
| Applications          | WB IHC ICC/IF IP FC                                                                                |
| Species Reactivity    | Human Mouse Rat                                                                                    |
| Specificity           | alpha Tubulin Antibody detects endogenous levels of total alpha Tubulin                            |
| Immunogen Description | A synthesized peptide derived from human alpha Tubulin                                             |
| Other Names           | Tubulin, alpha 4a; Tubulin H2-alpha; Tuba4a; bA408E5.3; B ALPHA 1                                  |
| Accession No.         | Uniprot:P68366                                                                                     |
| Uniprot               | P68366                                                                                             |
| Formulation           | Rabbit IgG in phosphate buffered saline , pH 7.4, 150mM NaCl, 0.02% sodium azide and 50% glycerol. |
| Storage               | Store at +4°C short term. Store at -20°C long term. Avoid freeze / thaw cycle.                     |

## Application Details

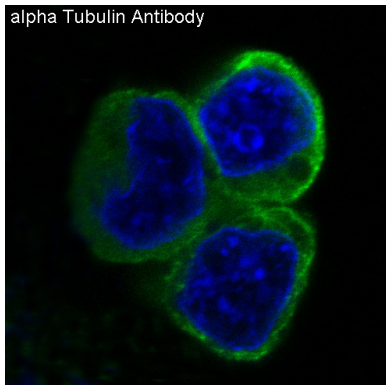
WB 1:1000~1:5000 IHC 1:50~1:200 ICC/IF 1:50~1:200 IP 1:50 FC 1:50

## Images

Western blot analysis of alpha Tubulin in (1) HeLa cell lysate;  
(2) NIH/3T3 cell lysate.



Immunohistochemical analysis of paraffin-embedded human bladder, using alpha Tubulin Antibody.



Immunofluorescent analysis of 293 cells, using alpha Tubulin Antibody .

## Product Description

Tubulin is the major constituent of microtubules. It binds two moles of GTP, one at an exchangeable site on the beta chain and one at a non-exchangeable site on the alpha chain.

## Background

Tubulin is the major constituent of microtubules. It binds two moles of GTP, one at an exchangeable site on the beta chain and one at a non-exchangeable site on the alpha chain.

Note: This product is for in vitro research use only