

alpha Tubulin Rabbit mAb

Catalog No: #58504

Package Size: #58504-1 50ul #58504-2 100ul

Orders: order@signalwayantibody.com

Support: tech@signalwayantibody.com

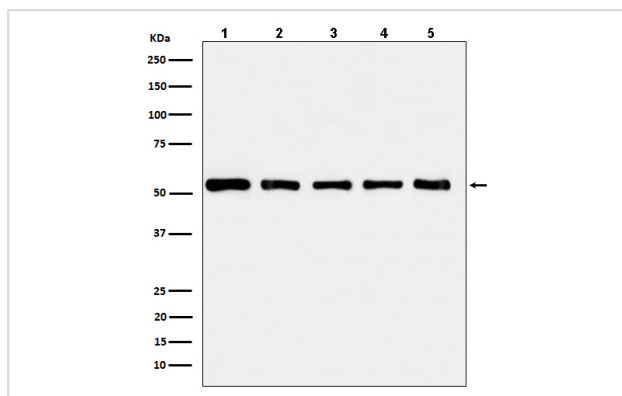
Description

Product Name	alpha Tubulin Rabbit mAb
Host Species	Rabbit
Clonality	Monoclonal
Isotype	Rabbit IgG
Purification	Affinity-chromatography
Applications	WB IHC ICC/IF IP FC
Species Reactivity	Human Mouse Rat
Specificity	alpha Tubulin Antibody detects endogenous levels of total alpha Tubulin
Immunogen Description	A synthesized peptide derived from human alpha Tubulin
Other Names	Alpha-tubulin 1; TUBA1; TUBA1A ; Tubulin alpha 1 chain; Tubulin alpha
Accession No.	Uniprot:P68366
Uniprot	P68366
Formulation	Rabbit IgG in phosphate buffered saline , pH 7.4, 150mM NaCl, 0.02% sodium azide and 50% glycerol.
Storage	Store at +4°C short term. Store at -20°C long term. Avoid freeze / thaw cycle.

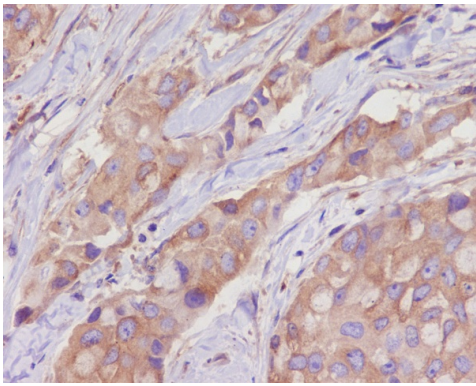
Application Details

WB 1:1000~1:10000 IHC 1:50~1:200 ICC/IF 1:50~1:200 IP 1:50 FC 1:50

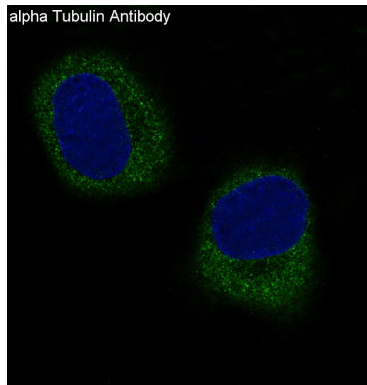
Images



Western blot analysis of alpha Tubulin in (1) HeLa cell lysate; (2) HepG2 cell lysate; (3) NIH/3T3 cell lysate; (4) Mouse brain lysate; (5) C6 cell lysate.



Immunohistochemical analysis of paraffin-embedded human breast cancer, using alpha Tubulin Antibody.



Immunofluorescent analysis of HeLa cells, using alpha Tubulin Antibody .

Product Description

TUBA1A Tubulin is the major constituent of microtubules. It binds two moles of GTP, one at an exchangeable site on the beta chain and one at a non-exchangeable site on the alpha-chain.

Background

TUBA1A Tubulin is the major constituent of microtubules. It binds two moles of GTP, one at an exchangeable site on the beta chain and one at a non-exchangeable site on the alpha-chain.

Note: This product is for in vitro research use only