

GST tag Rabbit mAb(HRP conjugated)

Catalog No: #58509

Package Size: #58509-1 50ul #58509-2 100ul

Orders: order@signalwayantibody.com

Support: tech@signalwayantibody.com

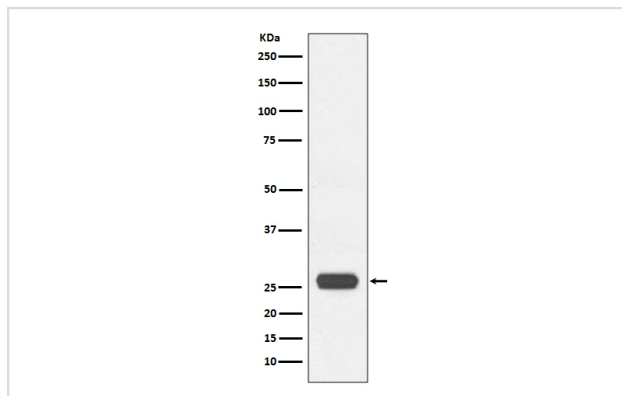
Description

Product Name	GST tag Rabbit mAb(HRP conjugated)
Host Species	Rabbit
Clonality	Monoclonal
Isotype	Rabbit IgG
Purification	Affinity-chromatography
Applications	WB
Species Reactivity	All
Specificity	GST Antibody detects endogenous levels of C-terminal, internal, and N-terminal GST-tagged proteins.
Immunogen Description	A synthesized peptide derived from GST
Formulation	Rabbit IgG in phosphate buffered saline , pH 7.4, 150mM NaCl, 0.02% sodium azide and 50% glycerol.
Storage	Store at +4°C short term. Store at -20°C long term. Avoid freeze / thaw cycle.

Application Details

WB 1:3000~1:10000

Images



Western blot analysis of GST expression in GST recombinant protein, using GST tag Antibody(HRP conjugated)

Product Description

GST-Tag antibody is part of the Tag series of antibodies, the best quality in the research.

Background

GST-Tag antibody is part of the Tag series of antibodies, the best quality in the research.

Note: This product is for in vitro research use only